

***GOAL DIGITAL ACADEMY COMMUNITY SCHOOL
RICHLAND COUNTY, OHIO***

AUDIT REPORT

For the Year Ended June 30, 2016





Dave Yost • Auditor of State

Board of Directors
GOAL Digital Academy Community School
890 W Fourth St Ste 400
Mansfield, OH 44906

We have reviewed the *Independent Auditor's Report* of the GOAL Digital Academy Community School, Richland County, prepared by Charles E. Harris & Associates, Inc., for the audit period July 1, 2015 through June 30, 2016. Based upon this review, we have accepted these reports in lieu of the audit required by Section 117.11, Revised Code. The Auditor of State did not audit the accompanying financial statements and, accordingly, we are unable to express, and do not express an opinion on them.

Our review was made in reference to the applicable sections of legislative criteria, as reflected by the Ohio Constitution, and the Revised Code, policies, procedures and guidelines of the Auditor of State, regulations and grant requirements. The GOAL Digital Academy Community School is responsible for compliance with these laws and regulations.

A handwritten signature in black ink that reads "Dave Yost".

Dave Yost
Auditor of State

April 26, 2017

This page intentionally left blank.

**GOAL DIGITAL ACADEMY COMMUNITY SCHOOL
 RICHLAND COUNTY
 AUDIT REPORT
 For the Year Ending June 30, 2016**

TABLE OF CONTENTS

TITLE	PAGE
Independent Auditor's Report.....	1-2
Management's Discussion and Analysis.....	3-8
Basic Financial Statements:	
Statement of Net Position	9
Statement of Recvenues, Expenses, and Changes in Net Position.....	10
Statement of Cash Flows.....	11
Notes to the Basic Financial Statements.....	13-30
Required Supplementary Information:	
Schedule of the GDA's Proportionate Share of Net Pension Liability:	
School Employees Retirement System (SERS) of Ohio.....	32
State Teachers Retirement System (STRS) of Ohio.....	33
Schedule of GDA Contributions:	
School Employees Retirement System (SERS) of Ohio.....	34-35
State Teachers Retirement System (STRS) of Ohio.....	36-37
Notes to Required Supplementary Information.....	38
Independent Auditor's Report on Internal Control Over Financial Reporting and on Compliance and Other Matters Required by <i>Government Auditing Standards</i>	39-40
Schedule of Prior Audit Findings.....	41

This page intentionally left blank.

Rockefeller Building
614 W Superior Ave Ste 1242
Cleveland OH 44113-1306
Office phone - (216) 575-1630
Fax - (216) 436-2411

Charles E. Harris & Associates, Inc.
Certified Public Accountants

INDEPENDENT AUDITOR'S REPORT

GOAL Digital Academy Community School
Richland County
890 West Fourth Street, Suite 400
Mansfield, Ohio 44906

To the Board of Directors:

Report on the Financial Statements

We have audited the accompanying financial statements of the GOAL Digital Academy Community School, Richland County, Ohio (the School), as of and for the year ended June 30, 2016, and the related notes to the financial statements, which collectively comprise the School's basic financial statements as listed in the table of contents.

Management's Responsibility for the Financial Statements

Management is responsible for preparing and fairly presenting these financial statements in accordance with accounting principles generally accepted in the United States of America; this includes designing, implementing, and maintaining internal control relevant to preparing and fairly presenting financial statements that are free from material misstatement, whether due to fraud or error.

Auditor's Responsibility

Our responsibility is to opine on these financial statements based on our audit. We audited in accordance with auditing standards generally accepted in the United States of America and the financial audit standards in the Comptroller General of the United States' *Government Auditing Standards*. Those standards require us to plan and perform the audit to reasonably assure the financial statements are free from material misstatement.

An audit requires obtaining evidence about financial statement amounts and disclosures. The procedures selected depend on our judgment, including assessing the risks of material financial statement misstatement, whether due to fraud or error. In assessing those risks, we consider internal control relevant to the School's preparation and fair presentation of the financial statements in order to design audit procedures that are appropriate in the circumstances, but not to the extent needed to opine on the effectiveness of the School's internal control. Accordingly, we express no opinion. An audit also includes evaluating the appropriateness of management's accounting policies and the reasonableness of their significant accounting estimates, as well as our evaluation of the overall financial statement presentation.

We believe the audit evidence we obtained is sufficient and appropriate to support our audit opinion.

Opinion

In our opinion, the financial statements referred to above present fairly, in all material respects, the financial position of the GOAL Digital Academy Community School, Richland County, Ohio, as of June 30, 2016, and the changes in financial position and cash flows thereof for the year then ended in accordance with the accounting principles generally accepted in the United States of America.


Other Matters

Required Supplementary Information

Accounting principles generally accepted in the United States of America require this presentation to include *Management's discussion and analysis* and schedules of net pension liabilities and pension contributions listed in the table of contents, to supplement the basic financial statements. Although this information is not part of the basic financial statements, the Governmental Accounting Standards Board considers it essential for placing the basic financial statements in an appropriate operational, economic, or historical context. We applied certain limited procedures to the required supplementary information in accordance with auditing standards generally accepted in the United States of America, consisting of inquiries of management about the methods of preparing the information and comparing the information for consistency with management's responses to our inquiries, to the basic financial statements, and other knowledge we obtained during our audit of the basic financial statements. We do not opine or provide any assurance on the information because the limited procedures do not provide us with sufficient evidence to opine or provide any other assurance.

Other Reporting Required by Government Auditing Standards

In accordance with *Government Auditing Standards*, we have also issued our report dated December 9, 2016, on our consideration of School's internal control over financial reporting and our tests of its compliance with certain provisions of laws, regulations, contracts and grant agreements and other matters. That report describes the scope of our internal control testing over financial reporting and compliance, and the results of that testing, and does not opine on internal control over financial reporting or on compliance. That report is an integral part of an audit performed in accordance with *Government Auditing Standards* in considering the School's internal control over financial reporting and compliance.



Charles E. Harris & Associates, Inc.
December 9, 2016

**THE GOAL DIGITAL ACADEMY COMMUNITY SCHOOL
RICHLAND COUNTY, OHIO**

**MANAGEMENT'S DISCUSSION AND ANALYSIS
FOR THE FISCAL YEAR ENDED JUNE 30, 2016
(UNAUDITED)**

The management's discussion and analysis of The GOAL Digital Academy Community School's (the "GDA") financial performance provides an overall review of the GDA's financial activities for the fiscal year ended June 30, 2016. The intent of this discussion and analysis is to look at the GDA's financial performance as a whole; readers should also review the notes to the basic financial statements and financial statements to enhance their understanding of the GDA's financial performance.

Financial Highlights

Key financial highlights for fiscal year 2016 are as follows:

- In total, net position increased \$414,849 which represents a 11.75% increase from 2015.
- The GDA had operating revenues of \$3,118,045 and operating expenses of \$2,977,670 for fiscal year 2016. The GDA's operating income and increase in net position for the fiscal year was \$140,375 and \$414,849 respectively.
- The GDA is the fiscal agent for the North East Jobs for Ohio's Graduates (JOG) program. Activities related the GDA's fiscal agent responsibilities for the JOG program have been reported as non-operating revenues and expenses in the GDA's financial statements.

Using these Basic Financial Statements

This annual report consists of a series of financial statements and notes to those statements. These statements are organized so the reader can understand the GDA's financial activities. The *statement of net position* and *statement of revenues, expenses and changes in net position* provide information about the activities of the GDA, including all short-term and long-term financial resources and obligations.

Reporting the GDA Financial Activities

Statement of Net Position, Statement of Revenues, Expenses, and Changes in Net Position and the Statement of Cash Flows

These documents look at all financial transactions and ask the question, "How did we do financially during 2016?" The statement of net position and the statement of revenues, expenses and changes in net position answer this question. These statements include *all assets, deferred outflows of resources, liabilities, deferred inflows of resources, revenues and expenses* using the *accrual basis of accounting* similar to the accounting used by most private-sector companies. This basis of accounting will take into account all of the current year's revenues and expenses regardless of when cash is received or paid.

These two statements report the GDA's *net position* and changes in that position. This change in net position is important because it tells the reader that, for the GDA as a whole, the *financial position* of the GDA has improved or diminished. The causes of this change may be the result of many factors, some financial, some not. These statements can be found on pages 9 and 10 of this report.

The statement of cash flows provides information about how the GDA finances and is meeting the cash flow needs of its operations. The statement of cash flows can be found on page 11 of this report.

**THE GOAL DIGITAL ACADEMY COMMUNITY SCHOOL
RICHLAND COUNTY, OHIO**

MANAGEMENT'S DISCUSSION AND ANALYSIS
FOR THE FISCAL YEAR ENDED JUNE 30, 2016
(UNAUDITED)

Notes to the Basic Financial Statements

The notes provide additional information that is essential to a full understanding of the data provided in the basic financial statements. These notes to the basic financial statements can be found on pages 13-30 of this report.

Required Supplementary Information

In addition to the basic financial statements and accompanying notes, this report also presents certain required supplementary information concerning GDA's net pension liability. The required supplementary information can be found on pages 32 through 38 of this report.

The table below provides a summary of GDA's net position for fiscal years 2016 and 2015.

	Net Position	
	Governmental Activities <u>2016</u>	Governmental Activities <u>2015</u>
<u>Assets</u>		
Current assets	\$ 1,354,715	\$ 1,245,837
Capital assets, net	<u>129,322</u>	<u>83,308</u>
Total assets	<u>1,484,037</u>	<u>1,329,145</u>
<u>Deferred Outflows of Resources</u>		
Pension	<u>384,857</u>	<u>254,446</u>
Total deferred outflows of resources	<u>384,857</u>	<u>254,446</u>
<u>Liabilities</u>		
Current liabilities	176,298	151,385
Non-current liabilities:		
Net pension liability	<u>3,645,217</u>	<u>4,219,512</u>
Total liabilities	<u>3,821,515</u>	<u>4,370,897</u>
<u>Deferred Inflows of Resources</u>		
Pensions	<u>1,163,721</u>	<u>743,885</u>
Total deferred inflows of resources	<u>1,163,721</u>	<u>743,885</u>
<u>Net Position</u>		
Investment in capital assets	129,322	83,308
Restricted	90,812	4,000
Unrestricted (deficit)	<u>(3,336,476)</u>	<u>(3,618,499)</u>
Total net position (restated)	<u>\$ (3,116,342)</u>	<u>\$ (3,531,191)</u>

**THE GOAL DIGITAL ACADEMY COMMUNITY SCHOOL
RICHLAND COUNTY, OHIO**

MANAGEMENT'S DISCUSSION AND ANALYSIS
FOR THE FISCAL YEAR ENDED JUNE 30, 2016
(UNAUDITED)

During a previous fiscal year, the GDA adopted GASB Statement 68, "Accounting and Financial Reporting for Pensions—an Amendment of GASB Statement 27," and GASB Statement 71, "Pension Transition for Contributions Made Subsequent to the Measurement Date – An Amendment of GASB Statement No. 68" which significantly revises accounting for pension costs and liabilities. For reasons discussed below, many end users of this financial statement will gain a clearer understanding of the GDA's actual financial condition by adding deferred inflows related to pension and the net pension liability to the reported net position and subtracting deferred outflows related to pension.

Governmental Accounting Standards Board standards are national and apply to all government financial reports prepared in accordance with generally accepted accounting principles. When accounting for pension costs, GASB 27 focused on a funding approach. This approach limited pension costs to contributions annually required by law, which may or may not be sufficient to fully fund each plan's *net pension liability*. GASB 68 takes an earnings approach to pension accounting; however, the nature of Ohio's statewide pension systems and state law governing those systems requires additional explanation in order to properly understand the information presented in these statements.

Under the new standards required by GASB 68, the net pension liability equals the GDA's proportionate share of each plan's collective:

1. Present value of estimated future pension benefits attributable to active and inactive employees' past service
2. Minus plan assets available to pay these benefits

GASB notes that pension obligations, whether funded or unfunded, are part of the "employment exchange" – that is, the employee is trading his or her labor in exchange for wages, benefits, and the promise of a future pension. GASB noted that the unfunded portion of this pension promise is a present obligation of the government, part of a bargained-for benefit to the employee, and should accordingly be reported by the government as a liability since they received the benefit of the exchange. However, the GDA is not responsible for certain key factors affecting the balance of this liability. In Ohio, the employee shares the obligation of funding pension benefits with the employer. Both employer and employee contribution rates are capped by State statute. A change in these caps requires action of both Houses of the General Assembly and approval of the Governor. Benefit provisions are also determined by State statute. The employee enters the employment exchange with the knowledge that the employer's promise is limited not by contract but by law. The employer enters the exchange also knowing that there is a specific, legal limit to its contribution to the pension system. In Ohio, there is no legal means to enforce the unfunded liability of the pension system *as against the public employer*. State law operates to mitigate/lessen the moral obligation of the public employer to the employee, because all parties enter the employment exchange with notice as to the law. The pension system is responsible for the administration of the plan.

Most long-term liabilities have set repayment schedules or, in the case of compensated absences (i.e. sick and vacation leave), are satisfied through paid time-off or termination payments. There is no repayment schedule for the net pension liability. As explained above, changes in pension benefits, contribution rates, and return on investments affect the balance of the net pension liability, but are outside the control of the local government. In the event that contributions, investment returns, and other changes are insufficient to keep up with required pension payments, State statute does not assign/identify the responsible party for the unfunded portion. Due to the unique nature of how the net pension liability is satisfied, this liability is separately identified within the long-term liability section of the statement of net position.

In accordance with GASB 68, the GDA's statements prepared on an accrual basis of accounting include an annual pension expense for their proportionate share of each plan's *change* in net pension liability not accounted for as deferred inflows/outflows.

**THE GOAL DIGITAL ACADEMY COMMUNITY SCHOOL
RICHLAND COUNTY, OHIO**

MANAGEMENT'S DISCUSSION AND ANALYSIS
FOR THE FISCAL YEAR ENDED JUNE 30, 2016
(UNAUDITED)

As a result of implementing GASB 68, the GDA is reporting a net pension liability and deferred inflows/outflows of resources related to pension on the accrual basis of accounting.

Over time, net position can serve as a useful indicator of a government's financial position. The increase in net position is due to an increase in State Foundation revenue and a decrease in salaries and wages expense. The decrease in charges for services is due the GDA no longer providing shared services to Tri-Rivers Career Center.

At year-end, capital assets represented 8.71% of total assets. Capital assets consisted of furniture and equipment. There is no debt related to these capital assets. Capital assets are used to provide services to the students and are not available for future spending. The table below provides a summary of the GDA's net position, liabilities and assets for 2016 and 2015.

The table below shows the changes in net position for fiscal years 2016 and 2015.

Change in Net Position

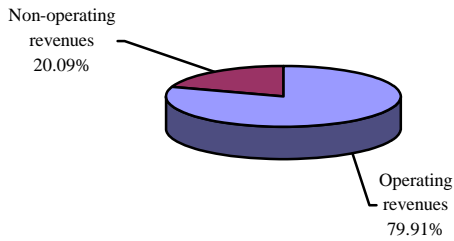
	<u>2016</u>	<u>2015</u>
<u>Operating revenues:</u>		
State foundation	\$ 3,037,451	\$ 2,821,176
Other	<u>80,594</u>	<u>66,335</u>
Total operating revenue	<u>3,118,045</u>	<u>2,887,511</u>
<u>Operating expenses:</u>		
Salaries and wages	1,569,005	1,232,347
Fringe benefits	217,266	429,381
Contract services	970,212	766,576
Materials and supplies	148,546	231,509
Depreciation	51,830	48,197
Other	<u>20,811</u>	<u>18,256</u>
Total operating expenses	<u>2,977,670</u>	<u>2,726,266</u>
<u>Non-operating revenues (expenses):</u>		
State and federal grants	339,462	236,379
Interest income	-	6
Fiscal agent activities:		
JOG program revenues	444,380	524,177
JOG program expenses	<u>(509,368)</u>	<u>(544,744)</u>
Total non-operating revenues (expenses)	<u>274,474</u>	<u>215,818</u>
Change in net position	414,849	377,063
Net position (deficit) at beginning of year	<u>(3,531,191)</u>	<u>(3,908,254)</u>
Net position (deficit) at end of year	<u>\$ (3,116,342)</u>	<u>\$ (3,531,191)</u>

**THE GOAL DIGITAL ACADEMY COMMUNITY SCHOOL
RICHLAND COUNTY, OHIO**

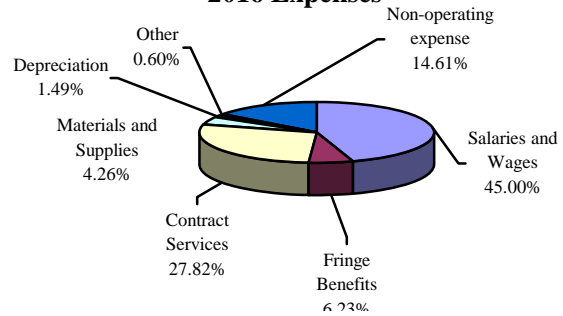
**MANAGEMENT'S DISCUSSION AND ANALYSIS
FOR THE FISCAL YEAR ENDED JUNE 30, 2016
(UNAUDITED)**

The charts below illustrate the revenues and expenses for the GDA during fiscal years 2016 and 2015:

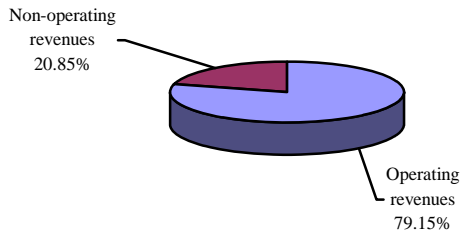
2016 Revenues



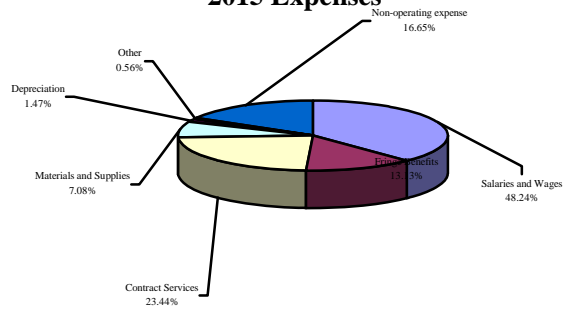
2016 Expenses



2015 Revenues



2015 Expenses



**THE GOAL DIGITAL ACADEMY COMMUNITY SCHOOL
RICHLAND COUNTY, OHIO**

**MANAGEMENT'S DISCUSSION AND ANALYSIS
FOR THE FISCAL YEAR ENDED JUNE 30, 2016
(UNAUDITED)**

Capital Assets

At June 30, 2016, the GDA had \$129,322 invested in furniture and equipment. See Note 6 to the basic financial statements for more detail on capital assets.

Current Financial Related Activities

The GOAL Digital Academy (GDA) is a conversion community E-School sponsored by Mid-Ohio Educational Service Center. This sponsorship was renewed and runs from July 1, 2012 through June 30, 2016.

GDA operates under less restrictive guidelines than a traditional "brick and mortar" school; and thus, is capable of providing their curriculum/education in a more cost-effective manner. Also, unlike traditional schools, a community school cannot levy any taxes and must survive on State revenues and donations. At this time GDA relies solely on State funding for their resources. That being stated, GDA is continually looking for more efficient and effective ways to educate children in order to balance the five year forecast. No additional resources outside of State funds are projected in the upcoming five-years.

GOAL Digital Academy is committed to operating within its financial means, and to working with the local community and agencies it serves to provide the required educational programs for its students.

Contacting the GDA Treasurer

This financial report is designed to provide citizens, taxpayers, investors and creditors with a general overview of GDA's finances and to show GDA's accountability for the resources it receives. If you have any questions, or concerns, about this report or need additional financial information, contact Steve Earnest, Treasurer, at GOAL Digital Academy, 890 West Fourth Street, Suite 400, Mansfield, Ohio 44906.

**GOAL DIGITAL ACADEMY COMMUNITY SCHOOL
RICHLAND COUNTY, OHIO**

STATEMENT OF NET POSITION
JUNE 30, 2016

Assets:	
Current assets:	
Cash and cash equivalents	\$ 1,183,034
Receivables:	
Accounts	375
Intergovernmental	161,609
Prepayments	<u>9,697</u>
Total current assets	1,354,715
Non-current assets:	
Capital assets, net	<u>129,322</u>
Total non-current assets.	<u>129,322</u>
Total assets.	1,484,037
Deferred outflows of resources:	
Pension - STRS	285,131
Pension - SERS	<u>99,726</u>
Total deferred outflows of resources	384,857
Liabilities:	
Current liabilities:	
Accounts payable.	5,504
Accrued wages and benefits	141,942
Pension and postemployment benefits payable.	22,089
Intergovernmental payable	<u>6,763</u>
Total current liabilities	176,298
Non-current liabilities:	
Net pension liability	<u>3,645,217</u>
Total non-current liabilities	<u>3,645,217</u>
Total liabilities	3,821,515
Deferred inflows of resources:	
Pension - STRS.	525,301
Pension - SERS.	<u>638,420</u>
Total deferred inflows of resources	1,163,721
Net position:	
Investment in capital assets.	129,322
Restricted for:	
State funded programs.	4,000
Restricted for federal programs	86,812
Unrestricted (deficit)	<u>(3,336,476)</u>
Total net position (deficit)	<u>\$ (3,116,342)</u>

SEE ACCOMPANYING NOTES TO THE BASIC FINANCIAL STATEMENTS

**GOAL DIGITAL ACADEMY COMMUNITY SCHOOL
RICHLAND COUNTY, OHIO**

STATEMENT OF REVENUES, EXPENSES AND
CHANGES IN NET POSITION
FOR THE FISCAL YEAR ENDED JUNE 30, 2016

Operating revenues:	
Foundation revenue	\$ 3,037,451
Other	80,594
Total operating revenues	<u>3,118,045</u>
Operating expenses:	
Salaries and wages.	1,569,005
Fringe benefits.	217,266
Contract services	970,212
Materials and supplies	148,546
Depreciation	51,830
Other.	20,811
Total operating expenses.	<u>2,977,670</u>
Operating income	<u>140,375</u>
Non-operating revenues (expenses):	
State and federal grants.	339,462
Fiscal agent activities:	
JOG program revenues	444,380
JOG program expenses	(509,368)
Total nonoperating revenues (expenses)	<u>274,474</u>
Change in net position	414,849
Net position (deficit) at beginning	
of year	<u>(3,531,191)</u>
Net position (deficit) at end of year	<u><u>\$ (3,116,342)</u></u>

SEE ACCOMPANYING NOTES TO THE BASIC FINANCIAL STATEMENTS

**GOAL DIGITAL ACADEMY COMMUNITY SCHOOL
RICHLAND COUNTY, OHIO**

STATEMENT OF CASH FLOWS
FOR THE FISCAL YEAR ENDED JUNE 30, 2016

Cash flows from operating activities:	
Cash received from State foundation	\$ 3,016,575
Cash received from other operations	65,636
Cash payments for salaries and wages	(2,025,082)
Cash payments for contractual services	(977,282)
Cash payments for materials and supplies	(145,418)
Cash payments for other expenses	(20,016)
	<hr/>
Net cash used in operating activities	(85,587)
Cash flows from noncapital financing activities:	
Cash received from State and federal grants	241,854
Fiscal agent activities:	
Cash received from JOG program	512,820
Cash used in payments for JOG program.	(509,368)
	<hr/>
Net cash used in noncapital financing activities.	245,306
Cash flows from capital and related financing activities:	
Acquisition of capital assets	(97,844)
	<hr/>
Net cash used in capital and related financing activities.	(97,844)
Net increase in cash and cash equivalents.	61,875
Cash and cash equivalents at beginning of year . . .	1,121,159
Cash and cash equivalents at end of year	<u>\$ 1,183,034</u>
Reconciliation of operating income to net cash provided by operating activities:	
Operating income.	\$ 140,375
Adjustments:	
Depreciation	51,830
Changes in assets, deferred outflows of resources, liabilities and deferred inflows of resources:	
Accounts receivable	(375)
Intergovernmental receivable	(9,684)
Prepayments.	(7,776)
Deferred outflows - Pension - STRS	(117,548)
Deferred outflows - Pension - SERS	(12,863)
Accounts payable	4,483
Accrued wages and benefits	21,269
Intergovernmental payable	(20,186)
Pension and postemployment benefits payable	19,347
Net pension liability.	(574,295)
Deferred inflows - Pension - STRS	44,093
Deferred inflows - Pension - SERS	375,743
	<hr/>
Net cash used in operating activities	<u>\$ (85,587)</u>

SEE ACCOMPANYING NOTES TO THE BASIC FINANCIAL STATEMENTS

**THIS PAGE
INTENTIONALLY LEFT BLANK**

**GOAL DIGITAL ACADEMY COMMUNITY SCHOOL
RICHLAND COUNTY, OHIO**

**NOTES TO THE BASIC FINANCIAL STATEMENTS
FOR THE FISCAL YEAR ENDED JUNE 30, 2016**

NOTE 1 - DESCRIPTION OF THE SCHOOL

GOAL Digital Academy Community School (“GDA”) is a nonprofit corporation established pursuant to Ohio Revised Code Chapters 3314 and 1702. GDA is an approved tax-exempt organization under Section 501 (c)(3) of the Internal Revenue Code. Management is not aware of any course of action or series of events that have occurred that might adversely affect their tax exempt status. GDA’s objective is to deliver a comprehensive educational program of high quality, tied to State and national standards, which can be delivered to students in the K - 12 population entirely through distance learning technologies. It is to be operated in cooperation with the Mid-Ohio Educational Service Center (the “Mid-Ohio ESC”) to provide an innovative and cost-effective solution to the special problems of disabled students, students removed from school for disciplinary reasons, students needing advanced or specialized courses which are not available locally, and other, including home-schooled students who are not currently enrolled in any public school and who are not receiving a meaningful, comprehensive, and standards-based educational program. GDA, which is part of the State’s education program, is nonsectarian in its programs, admissions policies, employment practices, and all other operations. GDA may acquire facilities as needed and contract for any services necessary for the operation of the school.

GDA was certified by the State of Ohio Secretary of State as a non-profit organization on April 23, 2002. GDA was approved for operation under a contract with Mount Gilead Exempted Village School District for a five year period commencing September 4, 2002. Sponsorship was subsequently transferred to Mid-Ohio ESC on July 1, 2007 for a five year period. The Sponsorship agreement was renewed through June 30, 2016. Mid-Ohio ESC is responsible for evaluating the performance of GDA and has the authority to deny renewal of the contract at its expiration.

GDA operates under the direction of the Treasurer and a five-member Board of Directors. The Board of Directors consists of five appointed members who represent a cross-section of the community and have been selected for their expertise in assisting GDA to achieve its mission and purposes. The GDA Treasurer shall be a non-voting ex officio member of GDA’s Board of Directors. The Board of Directors is responsible for carrying out the provisions of the contract which include, but are not limited to, State-mandated provisions regarding student population, curriculum, academic goals, performance standards, admission standards, and qualifications of teachers.

NOTE 2 - SUMMARY OF SIGNIFICANT ACCOUNTING POLICIES

The basic financial statements (BFS) of GDA have been prepared in conformity with accounting principles generally accepted in the United States of America (GAAP) as applied to governmental units. The Governmental Accounting Standards Board (GASB) is the accepted standard-setting body for establishing governmental accounting and financial reporting principles. GDA's significant accounting policies are described below.

**GOAL DIGITAL ACADEMY COMMUNITY SCHOOL
RICHLAND COUNTY, OHIO**

**NOTES TO THE BASIC FINANCIAL STATEMENTS
FOR THE FISCAL YEAR ENDED JUNE 30, 2016**

NOTE 2 - SUMMARY OF SIGNIFICANT ACCOUNTING POLICIES - (Continued)

A. Basis of Presentation

Enterprise accounting is used to account for operations that are financed and operated in a manner similar to private business enterprises and focuses on the determination of operating income, changes in net position, financial position, and cash flows. Enterprise accounting may be used to account for any activity for which a fee is charged to external users for goods or services.

B. Measurement Focus and Basis of Accounting

Enterprise accounting uses a flow of economic resources measurement focus. With this measurement focus, all assets and deferred outflows of resources and all liabilities and deferred inflows of resources are included on the balance sheet. Operating statements present increases (i.e., revenues) and decreases (i.e., expenses) in net position. The statement of cash flows reflects how GDA finances and meets its cash flow needs. Basis of accounting refers to when revenues and expenses are recognized in the accounts and reported in the financial statements. Basis of accounting relates to the timing of the measurements made. The accrual basis of accounting is utilized for reporting purposes. Revenues are recognized when they are earned, and expenses are recognized when they are incurred.

C. Deferred Outflows of Resources and Deferred Inflows of Resources

In addition to assets, the statement of net position will report a separate section for deferred outflows of resources. Deferred outflows of resources, represents a consumption of net position that applies to a future period and will not be recognized as an outflow of resources (expense/expenditure) until then. For the GDA, deferred outflows of resources have been reported for the following two items related the Academy's net pension liability: (1) the difference between expected and actual experience of the pension systems and (2) the GDA's contributions to the pension systems subsequent to the measurement date.

In addition to liabilities, the statement of net position will report a separate section for deferred inflows of resources. Deferred inflows of resources represent an acquisition of net position that applies to a future period and will not be recognized as an inflow of resources (revenue) until that time. For the GDA, deferred inflows of resources include the net difference between projected and actual earnings on pension plan investments related to the GDA's net pension liability and the change in the employer's proportion percentage and the difference between the employer's contributions and the employer's proportional share of contributions.

D. Budgetary Process

Unlike other public schools located in the State of Ohio, community schools are not required to follow budgetary provisions set forth in Ohio Revised Code Chapter 5705, unless specifically provided in the School's contract with its sponsor. The contract between GDA and Mid-Ohio ESC requires a detailed school budget for each year of the contract; however, the budget does not have to follow the provisions of Ohio Revised Code Chapter 5705.

**GOAL DIGITAL ACADEMY COMMUNITY SCHOOL
RICHLAND COUNTY, OHIO**

**NOTES TO THE BASIC FINANCIAL STATEMENTS
FOR THE FISCAL YEAR ENDED JUNE 30, 2016**

NOTE 2 - SUMMARY OF SIGNIFICANT ACCOUNTING POLICIES - (Continued)

E. Cash

All monies received by GDA are deposited in a demand deposit account. For purposes of the statement of cash flows and for presentation on the statement of net position, investments of the cash management pool and investments with an original maturity of three months or less at the time they are purchased by the GDA are presented on the financial statements as cash equivalents. The GDA did not have any investments during fiscal year 2016.

F. Capital Assets and Depreciation

All capital assets are capitalized at cost and updated for additions and reductions during the year. Donated capital assets are recorded at their acquisition value on the date donated. GDA maintains a capitalization threshold of \$500 for non-technical and non-audiovisual equipment and \$200 for technical and audiovisual equipment. GDA does not have any infrastructure. Improvements are capitalized. The costs of normal maintenance and repairs that do not add to the value of the asset or materially extend an asset's life are not capitalized.

All capital assets are depreciated. Improvements are depreciated over the remaining useful lives of the related capital assets. Depreciation is computed using the straight-line method. Equipment is depreciated over five to fifteen years.

G. Operating Revenues and Expenses

Operating revenues are those revenues that are generated directly from the primary activity of GDA. Operating expenses are necessary costs incurred to provide the service that is the primary activity of GDA. All revenues and expenses not meeting this definition are reported as non-operating.

H. Net Position

Net position represents the difference between assets and deferred outflows and liabilities and deferred inflows. The net position component "net investment in capital assets," consists of capital assets, net of accumulated depreciation, reduced by the outstanding balances of any borrowing used for the acquisition, construction or improvement of those assets. Deferred outflows of resources and deferred inflows of resources that are attributable to the acquisition, construction or improvement of those assets or related debt also should be included in this component of net position. Net position is reported as restricted when there are limitations imposed on its use either through the enabling legislation adopted by the GDA or through external restrictions imposed by creditors, grantors or laws or regulations of other governments.

The GDA applies restricted resources first when an expense is incurred for purposes for which both restricted and unrestricted net position is available.

**GOAL DIGITAL ACADEMY COMMUNITY SCHOOL
RICHLAND COUNTY, OHIO**

**NOTES TO THE BASIC FINANCIAL STATEMENTS
FOR THE FISCAL YEAR ENDED JUNE 30, 2016**

NOTE 2 - SUMMARY OF SIGNIFICANT ACCOUNTING POLICIES - (Continued)

I. Intergovernmental Revenue

GDA currently participates in the State Foundation Program. Revenues received from this program are recognized as operating revenues in the accounting period in which all eligibility requirements are met.

Federal and State grants are recognized as non-operating revenues in the accounting period in which all eligibility requirements have been met. Eligibility requirements include timing requirements, which specify the year when the resources are required to be used or the fiscal year when use is first permitted, matching requirements, in which GDA must provide local resources to be used for a specified purpose, and expense requirements, in which the resources are provided to GDA on a reimbursement basis.

GDA participates in various programs through the Ohio Department of Education. These include the Title I, IDEA Part B and Improving Teacher Quality.

J. Prepayments

Payments made to vendors for services that will benefit periods beyond June 30, 2016, are recorded as prepaid items using the consumption method. A current asset for the prepaid amounts is recorded at the time of the payment by GDA and the expense is recorded when used. GDA has prepaid items for insurance of \$9,697 at June 30, 2016.

K. Estimates

The preparation of financial statements in conformity with GAAP requires management to make estimates and assumptions that affect the amounts reported in the financial statements and accompanying notes. Actual results may differ from those estimates.

L. Pensions

For purposes of measuring the net pension liability, deferred outflows of resources and deferred inflows of resources related to pensions, and pension expense, information about the fiduciary net position of the pension plans and additions to/deductions from their fiduciary net position have been determined on the same basis as they are reported by the pension systems. For this purpose, benefit payments (including refunds of employee contributions) are recognized when due and payable in accordance with the benefit terms. The pension systems report investments at fair value.

NOTE 3 - ACCOUNTABILITY AND COMPLIANCE

Change in Accounting Principles

For fiscal year 2016, the Academy has implemented GASB Statement No. 72, "Fair Value Measurement and Application", GASB Statement No. 73 "Accounting and Financial Reporting for Pensions and Related Assets That Are Not within the Scope of GASB Statement 68, and Amendments to Certain Provisions of GASB Statements 67 and 68", GASB Statement No. 76, "The Hierarchy of Generally Accepted Accounting Principles for State and Local Governments", and GASB Statement No. 79, "Certain External Investment Pools and Pool Participants".

**GOAL DIGITAL ACADEMY COMMUNITY SCHOOL
RICHLAND COUNTY, OHIO**

**NOTES TO THE BASIC FINANCIAL STATEMENTS
FOR THE FISCAL YEAR ENDED JUNE 30, 2016**

NOTE 3 - ACCOUNTABILITY AND COMPLIANCE - (Continued)

GASB Statement No. 72 addresses accounting and financial reporting issues related to fair value measurement. This Statement also provides guidance for applying fair value to certain investments and disclosures related to all fair value measurements. The implementation of GASB Statement No. 72 did not have an effect on the financial statements of the Academy.

GASB Statement No. 73 improves the usefulness of information about pensions included in the general purposes external financial reports of state and local governments for making decisions and assessing accountability. The implementation of GASB Statement No. 73 did not have an effect on the financial statements of the Academy.

GASB Statement No. 76 identifies - in the context of the current governmental financial reporting environment - the hierarchy of generally accepted accounting principles (GAAP). This Statement reduces the GAAP hierarchy to two categories of authoritative GAAP and addresses the use of authoritative and nonauthoritative literature in the event that the accounting treatment for a transaction or other event is not specified within a source of authoritative GAAP. The implementation of GASB Statement No. 76 did not have an effect on the financial statements of the Academy.

GASB Statement No. 79 establishes criteria for an external investment pool to qualify for making the election to measure all of its investments at amortized cost for financial reporting purposes. The implementation of GASB Statement No. 79 did not have an effect on the financial statements of the Academy.

NOTE 4 - DEPOSITS AND INVESTMENTS

Deposits with Financial Institutions

At June 30, 2016, the carrying amount of all GDA deposits was \$1,183,034. Based on the criteria described in GASB Statement No. 40, "Deposits and Investment Risk Disclosures", as of June 30, 2016, \$1,051,296 of GDA's bank balance of \$1,301,296 was exposed to custodial credit risk as discussed below, while \$250,000 was covered by the Federal Deposit Insurance Corporation (FDIC).

Custodial credit risk is the risk that, in the event of bank failure, GDA's deposits may not be returned. All deposits are collateralized with eligible securities in amounts equal to at least 105% of the carrying value of the deposits. Such collateral, as permitted by the Ohio Revised Code, is held in single financial institution collateral pools at Federal Reserve Banks, or at member banks of the federal reserve system, in the name of the respective depository bank and pledged as a pool of collateral against all of the public deposits it holds or as specific collateral held at the Federal Reserve Bank in the name of GDA. GDA has no deposit policy for custodial credit risk beyond the requirements of State statute.

**GOAL DIGITAL ACADEMY COMMUNITY SCHOOL
RICHLAND COUNTY, OHIO**

**NOTES TO THE BASIC FINANCIAL STATEMENTS
FOR THE FISCAL YEAR ENDED JUNE 30, 2016**

NOTE 5 - RECEIVABLES

Receivables at June 30, 2016, consisted of accounts receivable and intergovernmental receivables arising from various sources. All receivables are considered collectable in full. A summary of the principal items of receivables follows:

Receivables	<u>Amount</u>
Accounts:	\$ 375
Intergovernmental:	
E-Rate Reimbursement	14,583
State Foundation Adjustment	6,308
IDEA Part-B	86,810
Improving Teacher Quality	12,568
JOG participants	<u>41,340</u>
Total receivables	<u>\$ 161,984</u>

NOTE 6 - CAPITAL ASSETS

A summary of capital assets at June 30, 2016 follows:

	<u>Balance</u> <u>6/30/15</u>	<u>Additions</u>	<u>Disposals</u>	<u>Balance</u> <u>6/30/16</u>
Furniture and equipment	\$ 818,708	\$ 97,844	\$ -	\$ 916,552
Less: accumulated depreciation	<u>(735,400)</u>	<u>(51,830)</u>	<u>-</u>	<u>(787,230)</u>
Net capital position	<u>\$ 83,308</u>	<u>\$ 46,014</u>	<u>\$ -</u>	<u>\$ 129,322</u>

NOTE 7 - RISK MANAGEMENT

GDA is exposed to various risks of loss related to torts; theft of, damage to, and destruction of assets; errors and omissions; injuries to employees; and natural disasters. GDA was named as an additional insured party on Mid-Ohio Educational Service Center, the Sponsor, insurance policy with Ohio Casualty Insurance Company for general liability insurance and property insurance from July 1, 2007 through December 9, 2008. On December 9, 2008, GDA began coverage under its own policy. GDA transfers the entire risk of loss, less any deductible, to the commercial carrier. The following limits and deductibles are in aggregate for GDA. The Liberty Mutual Insurance Company provides general liability coverage. The general liability coverage insures up to \$1,000,000 each occurrence with a \$2,000,000 annual aggregate with additional excess liability/commercial umbrella coverage up to \$2,000,000 each occurrence with a \$3,000,000 annual aggregate.

Settled claims have not exceeded commercial insurance coverage in any of the past three fiscal years and there has been no significant reduction in insurance coverage from the previous year.

The Liberty Mutual Insurance Company provides property, crime, and equipment breakdown insurance coverage. The property coverage insures up to a specific limit per location. Each location is insured to the value of property located at that location subject of a \$1,000 deductible; commercial crime covers up to \$25,000.

**GOAL DIGITAL ACADEMY COMMUNITY SCHOOL
RICHLAND COUNTY, OHIO**

**NOTES TO THE BASIC FINANCIAL STATEMENTS
FOR THE FISCAL YEAR ENDED JUNE 30, 2016**

NOTE 8 - DEFINED BENEFIT PENSION PLANS

Net Pension Liability

The net pension liability reported on the statement of net position represents a liability to employees for pensions. Pensions are a component of exchange transactions—between an employer and its employees—of salaries and benefits for employee services. Pensions are provided to an employee—on a deferred-payment basis—as part of the total compensation package offered by an employer for employee services each financial period. The obligation to sacrifice resources for pensions is a present obligation because it was created as a result of employment exchanges that already have occurred.

The net pension liability represents the Academy's proportionate share of each pension plan's collective actuarial present value of projected benefit payments attributable to past periods of service, net of each pension plan's fiduciary net position. The net pension liability calculation is dependent on critical long-term variables, including estimated average life expectancies, earnings on investments, cost of living adjustments and others. While these estimates use the best information available, unknowable future events require adjusting this estimate annually.

The Ohio Revised Code limits the Academy's obligation for this liability to annually required payments. The Academy cannot control benefit terms or the manner in which pensions are financed; however, the Academy does receive the benefit of employees' services in exchange for compensation including pension.

GASB 68 assumes the liability is solely the obligation of the employer, because (1) they benefit from employee services; and (2) State statute requires all funding to come from these employers. All contributions to date have come solely from these employers (which also includes costs paid in the form of withholdings from employees). State statute requires the pension plans to amortize unfunded liabilities within 30 years. If the amortization period exceeds 30 years, each pension plan's board must propose corrective action to the State legislature. Any resulting legislative change to benefits or funding could significantly affect the net pension liability. Resulting adjustments to the net pension liability would be effective when the changes are legally enforceable.

The proportionate share of each plan's unfunded benefits is presented as a long-term *net pension liability* on the accrual basis of accounting. Any liability for the contractually-required pension contribution outstanding at the end of the year is included in *pension and postemployment benefits payable* on the accrual basis of accounting.

**GOAL DIGITAL ACADEMY COMMUNITY SCHOOL
RICHLAND COUNTY, OHIO**

NOTES TO THE BASIC FINANCIAL STATEMENTS
FOR THE FISCAL YEAR ENDED JUNE 30, 2016

NOTE 8 - DEFINED BENEFIT PENSION PLANS - (Continued)

Plan Description - School Employees Retirement System (SERS)

Plan Description –Academy non-teaching employees participate in SERS, a cost-sharing multiple-employer defined benefit pension plan administered by SERS. SERS provides retirement, disability and survivor benefits, annual cost-of-living adjustments, and death benefits to plan members and beneficiaries. Authority to establish and amend benefits is provided by Ohio Revised Code Chapter 3309. SERS issues a publicly available, stand-alone financial report that includes financial statements, required supplementary information and detailed information about SERS’ fiduciary net position. That report can be obtained by visiting the SERS website at www.ohsers.org under Employers/Audit Resources.

Age and service requirements for retirement are as follows:

	Eligible to Retire on or before August 1, 2017 *	Eligible to Retire after August 1, 2017
Full Benefits	Any age with 30 years of service credit	Age 67 with 10 years of service credit; or Age 57 with 30 years of service credit
Actuarially Reduced Benefits	Age 60 with 5 years of service credit Age 55 with 25 years of service credit	Age 62 with 10 years of service credit; or Age 60 with 25 years of service credit

* Members with 25 years of service credit as of August 1, 2017, will be included in this plan.

Annual retirement benefits are calculated based on final average salary multiplied by a percentage that varies based on year of service; 2.2 percent for the first thirty years of service and 2.5 percent for years of service credit over 30. Final average salary is the average of the highest three years of salary.

One year after an effective benefit date, a benefit recipient is entitled to a three percent cost-of-living adjustment (COLA). This same COLA is added each year to the base benefit amount on the anniversary date of the benefit.

Funding Policy – Plan members are required to contribute 10 percent of their annual covered salary and the Academy is required to contribute 14 percent of annual covered payroll. The contribution requirements of plan members and employers are established and may be amended by the SERS’ Retirement Board up to statutory maximum amounts of 10 percent for plan members and 14 percent for employers. The Retirement Board, acting with the advice of the actuary, allocates the employer contribution rate among four of the System’s funds (Pension Trust Fund, Death Benefit Fund, Medicare B Fund, and Health Care Fund). For the fiscal year ended June 30, 2016, the entire 14 percent was allocated to pension, death benefits, and Medicare B and no portion of the employer contribution rate was allocated to the Health Care Fund.

The Academy’s contractually required contribution to SERS was \$78,402 for fiscal year 2016. Of this amount, \$3,971 is reported as pension and postemployment benefits payable.

**GOAL DIGITAL ACADEMY COMMUNITY SCHOOL
RICHLAND COUNTY, OHIO**

**NOTES TO THE BASIC FINANCIAL STATEMENTS
FOR THE FISCAL YEAR ENDED JUNE 30, 2016**

NOTE 8 - DEFINED BENEFIT PENSION PLANS - (Continued)

Plan Description - State Teachers Retirement System (STRS)

Plan Description –Academy licensed teachers and other faculty members participate in STRS Ohio, a cost-sharing multiple-employer public employee retirement system administered by STRS. STRS provides retirement and disability benefits to members and death and survivor benefits to beneficiaries. STRS issues a stand-alone financial report that includes financial statements, required supplementary information and detailed information about STRS’ fiduciary net position. That report can be obtained by writing to STRS, 275 E. Broad St., Columbus, OH 43215-3771, by calling (888) 227-7877, or by visiting the STRS Web site at www.strsoh.org.

New members have a choice of three retirement plans; a Defined Benefit (DB) Plan, a Defined Contribution (DC) Plan and a Combined Plan. Benefits are established by Ohio Revised Code Chapter 3307. The DB plan offers an annual retirement allowance based on final average salary multiplied by a percentage that varies based on years of service. Effective August 1, 2015, the calculation will be 2.2 percent of final average salary for the five highest years of earnings multiplied by all years of service. With certain exceptions, the basic benefit is increased each year by two percent of the original base benefit. For members retiring August 1, 2013, or later, the first two percent is paid on the fifth anniversary of the retirement benefit. Members are eligible to retire at age 60 with five years of qualifying service credit, or age 55 with 25 years of service, or 30 years of service regardless of age. Age and service requirements for retirement will increase effective August 1, 2015, and will continue to increase periodically until they reach age 60 with 35 years of service or age 65 with five years of service on August 1, 2026.

The DC Plan allows members to place all their member contributions and 9.5 percent of the 14 percent employer contributions into an investment account. Investment allocation decisions are determined by the member. The remaining 4.5 percent of the 14 percent employer rate is allocated to the defined benefit unfunded liability. A member is eligible to receive a retirement benefit at age 50 and termination of employment. The member may elect to receive a lifetime monthly annuity or a lump sum withdrawal.

The Combined Plan offers features of both the DB Plan and the DC Plan. In the Combined Plan, member contributions are allocated among investment choices by the member, and employer contributions are used to fund the defined benefit payment at a reduced level from the regular DB Plan. The defined benefit portion of the Combined Plan payment is payable to a member on or after age 60 with five years of services. The defined contribution portion of the account may be taken as a lump sum payment or converted to a lifetime monthly annuity at age 50.

New members who choose the DC plan or Combined Plan will have another opportunity to reselect a permanent plan during their fifth year of membership. Members may remain in the same plan or transfer to another STRS plan. The optional annuitization of a member’s defined contribution account or the defined contribution portion of a member’s Combined Plan account to a lifetime benefit results in STRS bearing the risk of investment gain or loss on the account. STRS has therefore included all three plan options as one defined benefit plan for GASB 68 reporting purposes.

A DB or Combined Plan member with five or more years of credited service who is determined to be disabled may qualify for a disability benefit. Eligible survivors of members who die before service retirement may qualify for monthly benefits. New members on or after July 1, 2013, must have at least ten years of qualifying service credit that apply for disability benefits. Members in the DC Plan who become disabled are entitled only to their account balance. If a member of the DC Plan dies before retirement benefits begin, the member’s designated beneficiary is entitled to receive the member’s account balance.

**GOAL DIGITAL ACADEMY COMMUNITY SCHOOL
RICHLAND COUNTY, OHIO**

NOTES TO THE BASIC FINANCIAL STATEMENTS
FOR THE FISCAL YEAR ENDED JUNE 30, 2016

NOTE 8 - DEFINED BENEFIT PENSION PLANS - (Continued)

Funding Policy – Employer and member contribution rates are established by the State Teachers Retirement Board and limited by Chapter 3307 of the Ohio Revised Code. The statutory maximum employee contribution rate was increased one percent July 1, 2014, and will be increased one percent each year until it reaches 14 percent on July 1, 2016. For the fiscal year ended June 30, 2016, plan members were required to contribute 13 percent of their annual covered salary. The Academy was required to contribute 14 percent; the entire 14 percent was the portion used to fund pension obligations. The fiscal year 2016 contribution rates were equal to the statutory maximum rates.

The Academy’s contractually required contribution to STRS was \$164,574 for fiscal year 2016. Of this amount, \$16,044 is reported as pension and postemployment benefits payable.

Pension Liabilities, Pension Expense, and Deferred Outflows of Resources and Deferred Inflows of Resources Related to Pensions

The net pension liability was measured as of June 30, 2015, and the total pension liability used to calculate the net pension liability was determined by an actuarial valuation as of that date. The Academy's proportion of the net pension liability was based on the Academy's share of contributions to the pension plan relative to the contributions of all participating entities. Following is information related to the proportionate share and pension expense:

	<u>SERS</u>	<u>STRS</u>	<u>Total</u>
Proportionate share of the net pension liability	\$ 1,051,057	\$ 2,594,160	\$ 3,645,217
Proportion of the net pension liability	0.01841990%	0.00938652%	
Pension expense	\$ (126,100)	\$ 84,206	\$ (41,894)

**GOAL DIGITAL ACADEMY COMMUNITY SCHOOL
RICHLAND COUNTY, OHIO**

NOTES TO THE BASIC FINANCIAL STATEMENTS
FOR THE FISCAL YEAR ENDED JUNE 30, 2016

NOTE 8 - DEFINED BENEFIT PENSION PLANS - (Continued)

At June 30, 2016, the Academy reported deferred outflows of resources and deferred inflows of resources related to pensions from the following sources:

	<u>SERS</u>	<u>STRS</u>	<u>Total</u>
Deferred outflows of resources			
Differences between expected and actual experience	\$ 21,324	\$ 120,557	\$ 141,881
Academy contributions subsequent to the measurement date	<u>78,402</u>	<u>164,574</u>	<u>242,976</u>
Total deferred outflows of resources	<u>\$ 99,726</u>	<u>\$ 285,131</u>	<u>\$ 384,857</u>
Deferred inflows of resources			
Net difference between projected and actual earnings on pension plan investments	\$ 118,356	\$ 230,685	\$ 349,041
Change in the employer's proportion percentage / difference between the employer's contributions and the employer's proportional share of contributions	<u>520,064</u>	<u>294,616</u>	<u>814,680</u>
Total deferred inflows of resources	<u>\$ 638,420</u>	<u>\$ 525,301</u>	<u>\$ 1,163,721</u>

\$242,976 reported as deferred outflows of resources related to pension resulting from Academy contributions subsequent to the measurement date will be recognized as a reduction of the net pension liability in the year ending June 30, 2017.

Other amounts reported as deferred outflows of resources and deferred inflows of resources related to pension will be recognized in pension expense as follows:

	<u>SERS</u>	<u>STRS</u>	<u>Total</u>
Fiscal Year Ending June 30:			
2017	\$ (205,205)	\$ (129,697)	\$ (334,902)
2018	(205,205)	(129,697)	(334,902)
2019	(205,207)	(129,696)	(334,903)
2020	<u>(1,479)</u>	<u>(15,654)</u>	<u>(17,133)</u>
Total	<u>\$ (617,096)</u>	<u>\$ (404,744)</u>	<u>\$ (1,021,840)</u>

Actuarial Assumptions - SERS

SERS' total pension liability was determined by their actuaries in accordance with GASB Statement No. 67, as part of their annual actuarial valuation for each defined benefit retirement plan. Actuarial valuations of an ongoing plan involve estimates of the value of reported amounts (e.g., salaries, credited service) and assumptions about the probability of occurrence of events far into the future (e.g., mortality, disabilities, retirements, employment termination). Actuarially determined amounts are subject to continual review and potential modifications, as actual results are compared with past expectations and new estimates are made about the future.

**GOAL DIGITAL ACADEMY COMMUNITY SCHOOL
RICHLAND COUNTY, OHIO**

**NOTES TO THE BASIC FINANCIAL STATEMENTS
FOR THE FISCAL YEAR ENDED JUNE 30, 2016**

NOTE 8 - DEFINED BENEFIT PENSION PLANS - (Continued)

Projections of benefits for financial reporting purposes are based on the substantive plan (the plan as understood by the employers and plan members) and include the types of benefits provided at the time of each valuation and the historical pattern of sharing benefit costs between the employers and plan members to that point. The projection of benefits for financial reporting purposes does not explicitly incorporate the potential effects of legal or contractual funding limitations.

Actuarial calculations reflect a long-term perspective. For a newly hired employee, actuarial calculations will take into account the employee's entire career with the employer and also take into consideration the benefits, if any, paid to the employee after termination of employment until the death of the employee and any applicable contingent annuitant. In many cases actuarial calculations reflect several decades of service with the employer and the payment of benefits after termination.

Key methods and assumptions used in calculating the total pension liability in the latest actuarial valuation, prepared as of June 30, 2015, are presented below:

Wage Inflation	3.25 percent
Future Salary Increases, including inflation	4.00 percent to 22.00 percent
COLA or Ad Hoc COLA	3 percent
Investment Rate of Return	7.75 percent net of investments expense, including inflation
Actuarial Cost Method	Entry Age Normal

For post-retirement mortality, the table used in evaluating allowances to be paid is the 1994 Group Annuity Mortality Table set back one year for both men and women. Special mortality tables are used for the period after disability retirement.

The most recent experience study was completed June 30, 2010.

The long-term return expectation for the Pension Plan Investments has been determined using a building-block approach and assumes a time horizon, as defined in SERS' *Statement of Investment Policy*. A forecasted rate of inflation serves as the baseline for the return expectation. Various real return premiums over the baseline inflation rate have been established for each asset class. The long-term expected nominal rate of return has been determined by calculating a weighted averaged of the expected real return premiums for each asset class, adding the projected inflation rate, and adding the expected return from rebalancing uncorrelated asset classes.

**GOAL DIGITAL ACADEMY COMMUNITY SCHOOL
RICHLAND COUNTY, OHIO**

NOTES TO THE BASIC FINANCIAL STATEMENTS
FOR THE FISCAL YEAR ENDED JUNE 30, 2016

NOTE 8 - DEFINED BENEFIT PENSION PLANS - (Continued)

The target allocation and best estimates of arithmetic real rates of return for each major assets class are summarized in the following table:

Asset Class	Target Allocation	Long-Term Expected Real Rate of Return
Cash	1.00 %	0.00 %
US Stocks	22.50	5.00
Non-US Stocks	22.50	5.50
Fixed Income	19.00	1.50
Private Equity	10.00	10.00
Real Assets	10.00	5.00
Multi-Asset Strategies	15.00	7.50
Total	<u>100.00 %</u>	

Discount Rate - The total pension liability was calculated using the discount rate of 7.75 percent. The projection of cash flows used to determine the discount rate assumed the contributions from employers and from the members would be computed based on contribution requirements as stipulated by State statute. Projected inflows from investment earning were calculated using the long-term assumed investment rate of return (7.75 percent). Based on those assumptions, the plan's fiduciary net position was projected to be available to make all future benefit payments of current plan members. Therefore, the long-term expected rate of return on pension plan investments was applied to all periods of projected benefits to determine the total pension liability.

Sensitivity of the Academy's Proportionate Share of the Net Pension Liability to Changes in the Discount Rate - Net pension liability is sensitive to changes in the discount rate, and to illustrate the potential impact the following table presents the net pension liability calculated using the discount rate of 7.75 percent, as well as what each plan's net pension liability would be if it were calculated using a discount rate that is one percentage point lower (6.75 percent), or one percentage point higher (8.75 percent) than the current rate.

	1% Decrease (6.75%)	Current Discount Rate (7.75%)	1% Increase (8.75%)
Academy's proportionate share of the net pension liability	\$ 1,457,439	\$ 1,051,057	\$ 708,851

**GOAL DIGITAL ACADEMY COMMUNITY SCHOOL
RICHLAND COUNTY, OHIO**

NOTES TO THE BASIC FINANCIAL STATEMENTS
FOR THE FISCAL YEAR ENDED JUNE 30, 2016

NOTE 8 - DEFINED BENEFIT PENSION PLANS - (Continued)

Actuarial Assumptions - STRS

The total pension liability in the June 30, 2015, actuarial valuation was determined using the following actuarial assumptions, applied to all periods included in the measurement:

Inflation	2.75 percent
Projected salary increases	2.75 percent at age 70 to 12.25 percent at age 20
Investment Rate of Return	7.75 percent, net of investment expenses
Cost-of-Living Adjustments (COLA)	2 percent simple applied as follows: for members retiring before August 1, 2013, 2 percent per year; for members retiring August 1, 2013, or later, 2 percent COLA paid on fifth anniversary of retirement date.

Mortality rates were based on the RP-2000 Combined Mortality Table (Projection 2022—Scale AA) for Males and Females. Males' ages are set-back two years through age 89 and no set-back for age 90 and above. Females younger than age 80 are set back four years, one year set back from age 80 through 89 and not set back from age 90 and above.

Actuarial assumptions used in the June 30, 2015, valuation are based on the results of an actuarial experience study, effective July 1, 2012.

The 10 year expected real rate of return on pension plan investments was determined by STRS' investment consultant by developing best estimates of expected future real rates of return for each major asset class. The target allocation and best estimates of geometric real rates of return for each major asset class are summarized as follows:

<u>Asset Class</u>	<u>Target Allocation</u>	<u>Long-Term Expected Real Rate of Return</u>
Domestic Equity	31.00 %	8.00 %
International Equity	26.00	7.85
Alternatives	14.00	8.00
Fixed Income	18.00	3.75
Real Estate	10.00	6.75
Liquidity Reserves	<u>1.00</u>	3.00
Total	<u>100.00 %</u>	

Discount Rate - The discount rate used to measure the total pension liability was 7.75 percent as of June 30, 2015. The projection of cash flows used to determine the discount rate assumes member and employer contributions will be made at the statutory contribution rates in accordance with rate increases described above. For this purpose, only employer contributions that are intended to fund benefits of current plan members and their beneficiaries are included. Projected employer contributions that are intended to fund the service costs of future plan members and their beneficiaries, as well as projected contributions from future plan members, are not included. Based on those assumptions, STRS' fiduciary net position was projected to be available to make all projected future benefit payments to current plan members as of June 30, 2015. Therefore, the long-term expected rate of return on pension plan investments of 7.75 percent was applied to all periods of projected benefit payment to determine the total pension liability as of June 30, 2015.

**GOAL DIGITAL ACADEMY COMMUNITY SCHOOL
RICHLAND COUNTY, OHIO**

NOTES TO THE BASIC FINANCIAL STATEMENTS
FOR THE FISCAL YEAR ENDED JUNE 30, 2016

NOTE 8 - DEFINED BENEFIT PENSION PLANS - (Continued)

Sensitivity of the Academy's Proportionate Share of the Net Pension Liability to Changes in the Discount Rate - The following table presents the Academy's proportionate share of the net pension liability calculated using the current period discount rate assumption of 7.75 percent, as well as what the Academy's proportionate share of the net pension liability would be if it were calculated using a discount rate that is one-percentage-point lower (6.75 percent) or one-percentage-point higher (8.75 percent) than the current rate:

	1% Decrease (6.75%)	Current Discount Rate (7.75%)	1% Increase (8.75%)
Academy's proportionate share of the net pension liability	\$ 3,603,483	\$ 2,594,160	\$ 1,740,626

NOTE 9 - POSTEMPLOYMENT BENEFITS

A. School Employees Retirement System

Health Care Plan Description - The Academy contributes to the SERS Health Care Fund, administered by SERS for non-certificated retirees and their beneficiaries. For GASB 45 purposes, this plan is considered a cost-sharing, multiple-employer, defined benefit other postemployment benefit (OPEB) plan. The Health Care Plan includes hospitalization and physicians' fees through several types of plans including HMO's, PPO's, Medicare Advantage, and traditional indemnity plans as well as a prescription drug program. The financial report of the Plan is included in the SERS Comprehensive Annual Financial Report which can be obtained on SERS' website at www.ohsers.org under Employers/Audit Resources.

Access to health care for retirees and beneficiaries is permitted in accordance with Section 3309 of the Ohio Revised Code. The Health Care Fund was established and is administered in accordance with Internal Revenue Code Section 105(e). SERS' Retirement Board reserves the right to change or discontinue any health plan or program. Health care is financed through a combination of employer contributions and retiree premiums, copays and deductibles on covered health care expenses, investment returns, and any funds received as a result of SERS' participation in Medicare programs. Active employee members do not contribute to the Health Care Plan. Retirees and their beneficiaries are required to pay a health care premium that varies depending on the plan selected, number of qualified years of service, Medicare eligibility and retirement status.

Funding Policy - State statute permits SERS to fund the health care benefits through employer contributions. Each year, after the allocation for statutorily required basic benefits, the Retirement Board allocates the remainder of the employer contribution of 14 percent of covered payroll to the Health Care Fund. For fiscal year 2016, none of the employer contribution was allocated to health care. In addition, employers pay a surcharge for employees earning less than an actuarially determined minimum compensation amount, pro-rated according to service credit earned. For fiscal year 2016, this amount was \$23,000. Statutes provide that no employer shall pay a health care surcharge greater than 2 percent of that employer's SERS-covered payroll; nor may SERS collect in aggregate more than 1.5 percent of the total statewide SERS-covered payroll for the health care surcharge. For fiscal year 2016, the Academy's surcharge obligation was \$1,514.

**GOAL DIGITAL ACADEMY COMMUNITY SCHOOL
RICHLAND COUNTY, OHIO**

**NOTES TO THE BASIC FINANCIAL STATEMENTS
FOR THE FISCAL YEAR ENDED JUNE 30, 2016**

NOTE 9 - POSTEMPLOYMENT BENEFITS - (Continued)

The Academy's contributions for health care for the fiscal years ended June 30, 2016, 2015, and 2014 were \$1,514, \$10,867, and \$5,180, respectively. The full amount has been contributed for fiscal years 2016, 2015 and 2014.

B. State Teachers Retirement System

Plan Description – The Academy participates in the cost-sharing multiple-employer defined benefit Health Plan administered by the State Teachers Retirement System of Ohio (STRS) for eligible retirees who participated in the defined benefit or combined pension plans offered by STRS. Ohio law authorizes STRS to offer this plan. Benefits include hospitalization, physicians' fees, prescription drugs and reimbursement of monthly Medicare Part B premiums. The Plan is included in the report of STRS which can be obtained by visiting www.strsoh.org or by calling (888) 227-7877.

Funding Policy – Ohio Revised Code Chapter 3307 authorizes STRS to offer the Plan and gives the Retirement Board authority over how much, if any, of the health care costs will be absorbed by STRS. Active employee members do not contribute to the Health Care Plan. All benefit recipients, for the most recent year, pay a monthly premium. Under Ohio law, funding for post-employment health care may be deducted from employer contributions. For fiscal years 2016 and 2015, STRS did not allocate any employer contributions to post-employment health care. The Academy's contributions for health care for the fiscal years ended June 30, 2016, 2015, and 2014 were \$0, \$0, and \$10,454, respectively. The full amount has been contributed for fiscal years 2016, 2015 and 2014.

NOTE 10 - CONTINGENCIES

A. Grants

The GDA received financial assistance from federal and State agencies in the form of grants. The expenditure of funds received under these programs generally requires compliance with terms and conditions specified in the grant agreements and are subject to audit by the grantor agencies. Any disallowed claims resulting from such audits could become a liability. However, in the opinion of management, any such disallowed claims will not have a material adverse effect on the overall financial position of GDA at June 30, 2016.

B. State Foundation Funding

GDA Foundation funding is based on the annualized full-time equivalent (FTE) enrollment of each student. Effective for the 2015-2016 school year, community schools must comply with minimum hours of instruction, instead of a minimum number of school days each year. The funding formula the Ohio Department of Education (ODE) is legislatively required to follow will continue to adjust as enrollment information is updated by the District, which can extend past the fiscal year-end. As of the date of this report, ODE has not finalized the impact of enrollment adjustments to the June 30, 2016 Foundation funding for the District; therefore, the financial statement impact is not determinable at this time. ODE and management believe this will result in either a receivable to or liability of the District.

C. Litigation

GDA is not a party to legal proceedings that, in the opinion of management, would have a material adverse effect on the financial statements.

**GOAL DIGITAL ACADEMY COMMUNITY SCHOOL
RICHLAND COUNTY, OHIO**

**NOTES TO THE BASIC FINANCIAL STATEMENTS
FOR THE FISCAL YEAR ENDED JUNE 30, 2016**

NOTE 11 - SERVICE CONTRACT

Mid-Ohio ESC and GDA entered into a service contract agreement. This agreement states that GDA may contract for various services from the Mid-Ohio ESC and reimburse the Board of Governors for these services. Mid-Ohio ESC agreed to provide the requested services and receive reimbursement from GDA pursuant to Ohio Revised Code Section 3317.11.

Mid-Ohio ESC's Board of Governors agreed to provide on an as-needed, or available basis, the following services for GDA:

1. Instructional services for all grade levels.
2. Collaboration for staff development programs for certified and non-certified staff.
3. Planning and consultative services for curriculum development.
4. Psychological services as needed for re-evaluations and initial multi-factored evaluations.
5. Fiscal services including payroll, retirement, and insurance.
6. Student services including E.M.I.S., Nursing, Speech, Guidance, and Therapy.
7. Classroom space and administrative services.
8. Custodial services.
9. Supervision/Director services.
10. Technology support.

Mid-Ohio ESC acts as the fiscal agent for the service agreement described above. As fiscal agent, the Board of Governors may enter into employment contracts with each certified teacher/administrator/aid whose services are to be shared with Mid-Ohio ESC. Other services may be provided based on mutual consent of both GDA and Mid-Ohio ESC.

NOTE 12 - CONTRACT SERVICES

Contract services include the following:

Professional and technical services	\$ 141,494
Property services	208,885
Travel mileage/meeting expense	29,041
Communications	188,809
Utilities	7,016
Connected craft or trade	20,700
Tuition and other similar payments	7,024
Pupil transportation	7,805
Other	<u>359,438</u>
Total	<u>\$ 970,212</u>

NOTE 13 - RELATED PARTY TRANSACTIONS

During 2012, GDA and Mid-Ohio ESC renewed their sponsorship agreement through June 30, 2016. In fiscal year 2016, payments were made by GDA to Mid-Ohio ESC totaling \$368,580 for services provided by Mid-Ohio ESC to GDA.

**GOAL DIGITAL ACADEMY COMMUNITY SCHOOL
RICHLAND COUNTY, OHIO**

**NOTES TO THE BASIC FINANCIAL STATEMENTS
FOR THE FISCAL YEAR ENDED JUNE 30, 2016**

NOTE 14 - OPERATING LEASE AGREEMENT

GDA entered into a lease agreement for the period September 15, 2010 through June 30, 2012 with Mid-Ohio ESC for space to house GDA. On June 27, 2012, GDA renewed the lease for the period July 1, 2012 through June 30, 2016. Mid-Ohio ESC leases 8,448 square feet at a cost of \$7,040 per month (or \$84,480 annually) from GDA.

NOTE 15 - FISCAL AGENT ACTIVITIES

Effective August 1, 2010, the GDA became fiscal agent for the North Central Jobs for Ohio's Graduates program (JOG). As fiscal agent, GDA processes all receipts and expenses of the JOG program. Revenues and expenses associated with the GDA's fiscal agent relationship for the JOG program have been recorded on GDA's financial statements as non-operating revenues and expenses. At June 30, 2016, a \$41,340 receivable has been recorded for services billed by the GDA as fiscal agent for JOG program, but not yet received from the participating school districts.

REQUIRED SUPPLEMENTARY INFORMATION

**GOAL DIGITAL ACADEMY COMMUNITY SCHOOL
RICHLAND COUNTY, OHIO**

SCHEDULES OF REQUIRED SUPPLEMENTARY INFORMATION

SCHEDULE OF THE GDA'S PROPORTIONATE SHARE OF
THE NET PENSION LIABILITY
SCHOOL EMPLOYEES RETIREMENT SYSTEM (SERS) OF OHIO

LAST THREE FISCAL YEARS (1)

	2015	2014	2013
GDA's proportion of the net pension liability	0.01841990%	0.03197900%	0.03197900%
GDA's proportionate share of the net pension liability	\$ 1,051,057	\$ 1,618,439	\$ 1,901,688
GDA's covered-employee payroll	\$ 554,537	\$ 929,257	\$ 731,387
GDA's proportionate share of the net pension liability as a percentage of its covered-employee payroll	189.54%	174.16%	260.01%
Plan fiduciary net position as a percentage of the total pension liability	69.16%	71.70%	65.52%

(1) Information prior to 2013 is not available.

**GOAL DIGITAL ACADEMY COMMUNITY SCHOOL
RICHLAND COUNTY, OHIO**

SCHEDULES OF REQUIRED SUPPLEMENTARY INFORMATION

SCHEDULE OF THE GDA'S PROPORTIONATE SHARE OF
THE NET PENSION LIABILITY
STATE TEACHERS RETIREMENT SYSTEM (STRS) OF OHIO

LAST THREE FISCAL YEARS (1)

	<u>2015</u>	<u>2014</u>	<u>2013</u>
GDA's proportion of the net pension liability	0.00938652%	0.01069368%	0.01069368%
GDA's proportionate share of the net pension liability	\$ 2,594,160	\$ 2,601,073	\$ 3,098,381
GDA's covered-employee payroll	\$ 1,018,157	\$ 1,092,600	\$ 924,169
GDA's proportionate share of the net pension liability as a percentage of its covered-employee payroll	254.79%	238.06%	335.26%
Plan fiduciary net position as a percentage of the total pension liability	72.10%	74.70%	69.30%

(1) Information prior to 2013 is not available.

**GOAL DIGITAL ACADEMY COMMUNITY SCHOOL
RICHLAND COUNTY, OHIO**

SCHEDULES OF REQUIRED SUPPLEMENTARY INFORMATION

SCHEDULE OF GDA'S CONTRIBUTIONS
SCHOOL EMPLOYEES RETIREMENT SYSTEM (SERS) OF OHIO

LAST EIGHT FISCAL YEARS (1)

	<u>2016</u>	<u>2015</u>	<u>2014</u>	<u>2013</u>
Contractually required contribution	\$ 78,402	\$ 73,088	\$ 128,795	\$ 101,224
Contributions in relation to the contractually required contribution	<u>(78,402)</u>	<u>(73,088)</u>	<u>(128,795)</u>	<u>(101,224)</u>
Contribution deficiency (excess)	<u>\$ -</u>	<u>\$ -</u>	<u>\$ -</u>	<u>\$ -</u>
GDA's covered-employee payroll	\$ 560,014	\$ 554,537	\$ 929,257	\$ 731,387
Contributions as a percentage of covered-employee payroll	14.00%	13.18%	13.86%	13.84%

(1) Information prior to 2009 is not available.

<u>2012</u>	<u>2011</u>	<u>2010</u>	<u>2009</u>
\$ 100,850	\$ 89,822	\$ 38,391	\$ 20,091
<u>(100,850)</u>	<u>(89,822)</u>	<u>(38,391)</u>	<u>(20,091)</u>
<u>\$ -</u>	<u>\$ -</u>	<u>\$ -</u>	<u>\$ -</u>
\$ 749,814	\$ 714,574	\$ 283,538	\$ 204,177
13.45%	12.57%	13.54%	9.84%

**GOAL DIGITAL ACADEMY COMMUNITY SCHOOL
RICHLAND COUNTY, OHIO**

SCHEDULES OF REQUIRED SUPPLEMENTARY INFORMATION

SCHEDULE OF GDA'S CONTRIBUTIONS
STATE TEACHERS RETIREMENT SYSTEM (STRS) OF OHIO

LAST EIGHT FISCAL YEARS (1)

	<u>2016</u>	<u>2015</u>	<u>2014</u>	<u>2013</u>
Contractually required contribution	\$ 164,574	\$ 142,542	\$ 142,038	\$ 120,142
Contributions in relation to the contractually required contribution	<u>(164,574)</u>	<u>(142,542)</u>	<u>(142,038)</u>	<u>(120,142)</u>
Contribution deficiency (excess)	<u>\$ -</u>	<u>\$ -</u>	<u>\$ -</u>	<u>\$ -</u>
GDA's covered-employee payroll	\$ 1,175,529	\$ 1,018,157	\$ 1,092,600	\$ 924,169
Contributions as a percentage of covered-employee payroll	14.00%	14.00%	13.00%	13.00%

(1) Information prior to 2009 is not available.

<u>2012</u>	<u>2011</u>	<u>2010</u>	<u>2009</u>
\$ 118,221	\$ 126,663	\$ 107,910	\$ 75,131
<u>(118,221)</u>	<u>(126,663)</u>	<u>(107,910)</u>	<u>(75,131)</u>
<u>\$ -</u>	<u>\$ -</u>	<u>\$ -</u>	<u>\$ -</u>
\$ 909,392	\$ 974,331	\$ 830,077	\$ 577,931
13.00%	13.00%	13.00%	13.00%

**GOAL DIGITAL ACADEMY COMMUNITY SCHOOL
RICHLAND COUNTY, OHIO**

NOTES TO REQUIRED SUPPLEMENTARY INFORMATION
FOR THE FISCAL YEAR ENDED JUNE 30, 2016

SCHOOL EMPLOYEES RETIREMENT SYSTEM (SERS) OF OHIO

Changes in benefit terms : There were no changes in benefit terms from the amounts reported for fiscal years 2014-2016.

Changes in assumptions : There were no changes in methods and assumptions used in the calculation of actuarial determined contributions for fiscal years 2014-2016. See the notes to the basic financial statements for the methods and assumptions in this calculation.

STATE TEACHERS RETIREMENT SYSTEM (STRS) OF OHIO

Changes in benefit terms : There were no changes in benefit terms from the amounts reported for fiscal years 2014-2016.

Changes in assumptions : There were no changes in methods and assumptions used in the calculation of actuarial determined contributions for fiscal years 2014-2016. See the notes to the basic financial statements for the methods and assumptions in this calculation.

Rockefeller Building
614 W Superior Ave Ste 1242
Cleveland OH 44113-1306
Office phone - (216) 575-1630
Fax - (216) 436-2411

Charles E. Harris & Associates, Inc.
Certified Public Accountants

**INDEPENDENT AUDITOR'S REPORT ON INTERNAL CONTROL OVER
FINANCIAL REPORTING AND ON COMPLIANCE AND OTHER MATTERS
REQUIRED BY GOVERNMENT AUDITING STANDARDS**

GOAL Digital Academy Community School
Richland County
890 West Fourth Street, Suite 400
Mansfield, Ohio 44906

To the Board of Directors:

We have audited, in accordance with auditing standards generally accepted in the United States and the Comptroller General of the United States' *Government Auditing Standards*, the financial statements of the GOAL Digital Academy Community School, Richland County, (the School) as of and for the year ended June 30, 2016, and the related notes to the financial statements, which collectively comprise the School's basic financial statements and have issued our report thereon dated December 9, 2016.

Internal Control Over Financial Reporting

As part of our financial statement audit, we considered the School's internal control over financial reporting (internal control) to determine the audit procedures appropriate in the circumstances to the extent necessary to support our opinion on the financial statements, but not to the extent necessary to opine on the effectiveness of the School's internal control. Accordingly, we have not opined on it.

A *deficiency in internal control* exists when the design or operation of a control does not allow management or employees, when performing their assigned functions, to prevent, or detect and timely correct misstatements. A *material weakness* is a deficiency, or combination of internal control deficiencies resulting in a reasonable possibility that internal control will not prevent or detect and timely correct a material misstatement of the School's financial statements. A *significant deficiency* is a deficiency, or a combination of deficiencies, in internal control that is less severe than a material weakness, yet important enough to merit attention by those charged with governance.

Our consideration of internal control was for the limited purpose described in the first paragraph of this section and was not designed to identify all internal control deficiencies that might be material weaknesses or significant deficiencies. Given these limitations, we did not identify any deficiencies in internal control that we consider material weaknesses. However, unidentified material weaknesses may exist.

Compliance and Other Matters

As part of reasonably assuring whether the School's financial statements are free of material misstatement, we tested its compliance with certain provisions of laws, regulations, contracts, and grant agreements, noncompliance with which could directly and materially affect the determination of financial statement amounts. However, opining on compliance with those provisions was not an objective of our audit and accordingly, we do not express an opinion. The results of our tests disclosed no instances of noncompliance or other matters we must report under *Government Auditing Standards*.

We did note certain matters not requiring inclusion in this report that we reported to the School's management in a separate letter dated December 9, 2016.

Purpose of this Report

This report only describes the scope of our internal control and compliance testing and our testing results, and does not opine on the effectiveness of the School's internal control or on compliance. This report is an integral part of an audit performed under *Government Auditing Standards* in considering the School's internal control and compliance. Accordingly, this communication is not suitable for any other purpose.



Charles E. Harris & Associates, Inc.
December 9, 2016

**GOAL DIGITAL ACADEMY COMMUNITY SCHOOL
RICHLAND COUNTY, OHIO**

**SCHEDULE OF PRIOR AUDIT FINDINGS
JUNE 30, 2016**

The prior audit, for the year ended June 30, 2015, reported no material citations or recommendations.

This page intentionally left blank.



Dave Yost • Auditor of State

GOAL DIGITAL ACADEMY COMMUNITY SCHOOL

RICHLAND COUNTY

CLERK'S CERTIFICATION

This is a true and correct copy of the report which is required to be filed in the Office of the Auditor of State pursuant to Section 117.26, Revised Code, and which is filed in Columbus, Ohio.

Susan Babbitt

CLERK OF THE BUREAU

**CERTIFIED
MAY 9, 2017**