

**Life Skills Center of Middletown  
Butler County, Ohio**

\* \* \* \*

*Audit Report Letters*

***June 30, 2011***





# Dave Yost • Auditor of State

Board of Directors  
Life Skills Center of Middletown  
631 South Breiel Road  
Middletown, Ohio 45044

We have reviewed the *Independent Auditor's Report* of the Life Skills Center of Middletown, Summit County, prepared by Rea & Associates, Inc., for the audit period July 1, 2010 through June 30, 2011. Based upon this review, we have accepted these reports in lieu of the audit required by Section 117.11, Revised Code. The Auditor of State did not audit the accompanying financial statements and, accordingly, we are unable to express, and do not express an opinion on them.

Our review was made in reference to the applicable sections of legislative criteria, as reflected by the Ohio Constitution, and the Revised Code, policies, procedures and guidelines of the Auditor of State, regulations and grant requirements. The Life Skills Center of Middletown is responsible for compliance with these laws and regulations.

A handwritten signature in black ink that reads "Dave Yost".

Dave Yost  
Auditor of State

February 2, 2012

**This page intentionally left blank.**

**Life Skills Center of Middletown  
Butler County, Ohio**

***Audit Report Letters***

***June 30, 2011***

Table of Contents

	Page
Independent Auditor's Report on Internal Control over Financial Reporting and on Compliance and Other Matters Based on an Audit of Financial Statements Performed in Accordance with Government Auditing Standards.....	1
Independent Accountant's Report on Applying Agreed Upon Procedures.....	3

**This page intentionally left blank.**

December 15, 2011

To the Board of Directors  
Life Skills Center of Middletown  
631 South Breiel Road  
Middletown, OH 45044

**INDEPENDENT AUDITOR'S REPORT ON INTERNAL CONTROL OVER FINANCIAL REPORTING AND ON COMPLIANCE AND OTHER MATTERS BASED ON AN AUDIT OF FINANCIAL STATEMENTS PERFORMED IN ACCORDANCE WITH GOVERNMENT AUDITING STANDARDS**

We have audited the financial statements of the Life Skills Center of Middletown (the School) as of and for the year ended June 30, 2011, which collectively comprise the School's basic financial statements and have issued our report thereon dated December 15, 2011. We conducted our audit in accordance with auditing standards generally accepted in the United States of America and the standards applicable to financial audits contained in *Government Auditing Standards*, issued by the Comptroller General of the United States.

**Internal Control Over Financial Reporting**

Management of Life Skills Center of Middletown is responsible for establishing and maintaining effective internal control over financial reporting. In planning and performing our audit, we considered the School's internal control over financial reporting as a basis for designing our audit procedures for the purpose of expressing our opinion on the financial statements, but not for the purpose of expressing an opinion on the effectiveness of the School's internal control over financial reporting. Accordingly, we do not express an opinion on the effectiveness of the School's internal control over financial reporting.

A deficiency in internal control exists when the design or operation of a control does not allow management or employees, in the normal course of performing their assigned functions, to prevent, or detect and correct misstatements on a timely basis. A material weakness is a deficiency, or combination of deficiencies, in internal control, such that there is a reasonable possibility that a material misstatement of the entity's financial statements will not be prevented, or detected and corrected on a timely basis.

Our consideration of internal control over financial reporting was for the limited purpose described in the first paragraph of this section and was not designed to identify all deficiencies in internal control over financial reporting that might be deficiencies, significant deficiencies or material weaknesses. We did not identify any deficiencies in internal control over financial reporting that we consider material weaknesses as defined above.

### **Compliance and Other Matters**

As part of obtaining reasonable assurance about whether the School's financial statements are free of material misstatement, we performed tests of its compliance with certain provisions of laws, regulations, contracts and grant agreements, noncompliance with which could have a direct and material effect on the determination of financial statement amounts. However, providing an opinion on compliance with those provisions was not an objective of our audit and, accordingly, we do not express such an opinion. The results of our tests disclosed no instances of noncompliance or other matters that we must report under *Government Auditing Standards*.

This report is intended solely for the information and use of the Board of Directors, audit committee, management and the School's sponsor, and is not intended to be and should not be used by anyone other than these specific parties.

*Rea & Associates, Inc.*



**Independent Accountant's Report on Applying Agreed-Upon Procedures**

Board of Directors  
Life Skills Center of Middletown  
631 South Breiel Road  
Middletown, Ohio 45044

December 15, 2011

To the Board of Directors:

Ohio Rev. Code Section 117.53 states "the auditor of state shall identify whether the school district or community school has adopted an anti-harassment policy in accordance with Section 3313.666 of the Revised Code. This determination shall be recorded in the audit report. The auditor of state shall not prescribe the content or operation of any anti-harassment policy adopted by a school district or community school."

Accordingly, we have performed the procedure enumerated below, which was agreed to by the Board, solely to assist the Board in evaluating whether the Life Skills Center of Middletown (the School) has updated its anti-harassment policy in accordance with Ohio Rev. Code Section 3313.666. Management is responsible for complying with this requirement. This agreed-upon procedure engagement was conducted in accordance with attestation standards established by the American Institute of Certified Public Accountants. The sufficiency of this procedure is solely the responsibility of the Board. Consequently; we make no representation regarding the sufficiency of the procedure described below either for the purpose for which this report has been requested or for any other purpose.

1. We noted the School amended its anti-harassment policy at its meeting on September 14, 2010 to include violence within a dating relationship within its definition of harassment, intimidation or bullying.

We were not engaged to and did not conduct an examination, the objective of which would be the expression of an opinion on compliance with the anti-harassment policy. Accordingly, we do not express such an opinion. Had we performed additional procedures, other matters might have come to our attention that would have been reported to you.

This report is intended solely for the information and use of the Board and Sponsor, and is not intended to be and should not be used by anyone other than these specified parties.

*Rea & Associates, Inc.*

**This page intentionally left blank.**

# **Comprehensive Annual Financial Report**

For the Year Ended June 30, 2011



**Life Skills Center of Middletown**

**Middletown, Ohio**

**Life Skills Center of Middletown  
Middletown, Ohio**

**Comprehensive Annual Financial Report  
For the Year Ended June 30, 2011**

**Prepared by Brian G. Adams MBA, CMA, CFM, CrFA**

**LIFE SKILLS CENTER OF MIDDLETOWN  
BUTLER COUNTY**

**COMPREHENSIVE ANNUAL FINANCIAL REPORT  
FOR THE YEAR ENDED JUNE 30, 2011**

**TABLE OF CONTENTS**

<b>Title</b>	<b>Page</b>
<b>INTRODUCTORY SECTION</b>	
Letter of Transmittal.....	i
Board of Directors.....	iv
Organizational Chart.....	v
Government Finance Officers Association Certificate.....	vi
<b>FINANCIAL SECTION</b>	
Independent Auditor's Report .....	1
Management's Discussion and Analysis.....	3
Basic Financial Statements:	
Statement of Net Assets .....	7
Statement of Revenues, Expenses, and Changes in Net Assets.....	8
Statement of Cash Flows .....	9
Notes to the Basic Financial Statements .....	11
<b>STATISTICAL TABLES</b>	
Operating Expenses by Category - Last Ten Fiscal Years .....	24
Operating and Non-Operating Revenues - Last Ten Fiscal Years.....	25
Full Time Equivalent (FTE) Enrollment - Last Ten Fiscal Years .....	26
Grant Revenues by Source - Last Ten Fiscal Years .....	27
Net Assets - Last Ten Fiscal Years .....	28
State Basic Aid - Per Pupil Funding Amount - Last Ten Fiscal Years.....	29
Student Population by Resident District - 2011 Fiscal Year.....	30
Miscellaneous Statistics.....	31

**This page intentionally left blank.**

# Introductory Section

**This page intentionally left blank.**





631 S Breiel Blvd  
Middletown, Ohio 45042

(513) 423-1800 (p)  
(513) 423-1818 (f)  
[www.lifeskillscenters.com](http://www.lifeskillscenters.com)

---

December 15<sup>th</sup>, 2011

Life Skills Center of Middletown Community  
Members of the Board of Directors

We are pleased to present the Comprehensive Annual Financial Report (CAFR) of the Life Skills Center of Middletown (the School) for the fiscal year ended June 30, 2011. The CAFR is designed to assist and guide the reader in understanding its contents. The report consists of three major sections:

Introductory Section The Introductory Section includes the Transmittal Letter, a list of our Board members, an organizational chart, and GFOA Certificate of Achievement.

Financial Section The Financial Section consists of the Independent Auditor's Report, Management's Discussion and Analysis, and the Basic Financial Statements as well as the Notes to the Basic Financial Statements that provide an overview of the School's financial position and operating results.

Statistical Section The Statistical Section includes selected financial and demographic information about the School on a multi-year basis.

The School's management is responsible for the reliability of the data presented and the completeness of the presentation, including all disclosures. To the best of our knowledge, the enclosed data is accurate in all material respects and is reported in a manner designed to present fairly the financial position and results of operations of the School. All disclosures necessary to enable the reader to gain an understanding of the School's financial activities have been included.

Further, the School has established a comprehensive framework of internal controls that is designed to compile sufficient reliable information for the preparation of its financial statements in accordance with generally accepted accounting principles (GAAP). Because the cost of internal controls should not outweigh their benefits, the School's comprehensive framework of internal controls has been designed to provide reasonable rather than absolute assurance that the financial statements will be free from material misstatements.

Ohio law requires independent audits be performed on all financial operations of the School either by the Auditor of State or an independent public accounting firm in accordance with generally accepted accounting principles (GAAP) and generally accepted auditing standards (GAAS). Rea & Associates' Inc. rendered an opinion on the School's financial statements as of June 30, 2011 and the Independent Auditor's Report on the Basic Financial Statements is included in the Financial Section herein.

As required by GASB Statement No. 34, "Basic Financial Statements and Management's Discussion and Analysis for State and Local Governments", management is also responsible for preparing a discussion and analysis of the School. This Letter of Transmittal is designed to complement the Management's Discussion and Analysis and should be read in conjunction with it. This discussion follows the Independent Auditor's Report and provides an assessment of the School's finances for fiscal year 2011 and the outlook for the future.

### Profile of the Government

Ohio charter schools began operating after the passage of a 1997 State law. Charter schools, commonly referred to as “community schools” in Ohio, are public, non-profit, non-sectarian schools established to operate independently of any School District. These schools also are exempt from many of the education laws of the State allowing them to bring innovation and efficiency to the traditional education model. More importantly, the passage of this law made the concept of school choice a reality in Ohio. As required by law, each of these community schools must have a sponsor. Effective July 1, 2010, the School entered into a contract with a sponsor, St. Aloysius Orphanage. St. Aloysius Orphanage provides oversight and advisory services to 46 community schools throughout the State serving over 10,000 children.

Life Skills Center of Middletown is a School that brings an innovative approach to addressing the high school dropout epidemic head on. This alternative high school program offers at-risk students ages 16-21 years old an opportunity to have a second chance at obtaining a quality education and vocational training and placement. Participation in this program leads students to a high school diploma, not a GED and places them on a path to success (see more at [www.lifeskillscenters.com](http://www.lifeskillscenters.com)). The School, which first opened its doors in September 2001 in Middletown, Ohio, is run by a seven member Board of Directors.

The School looks to its nearly nine-year history of consistently graduating students from its program twice a year as a measure of its success. The School has contracted with LS Middletown, LLC, a subsidiary of White Hat Management, LLC (the Company) to operate the School on a day-to-day basis. White Hat Management is a national leader in professional education management that operates 46 schools in six states under the auspices of three separate educational ventures. The Company has managed the School since its inception.

### Economic Issues

Since the enactment of community school legislation, the School has been funded solely on the per pupil funding set forth by State of Ohio (see Statistical Section for historical funding levels). Historically, the School has seen increases in the base level per pupil funding amount. However, this amount is still less than the amount that traditional school districts in the State receive per pupil, primarily because community schools are not authorized by statute to levy taxes in the communities that they operate in. By comparison, the Middletown City School District receives over \$11,000 in average per pupil funding from all sources whereas the School (which is also located in the City of Middletown) receives only \$8,982 from all sources. These disparities in funding are in part, the reason why contracting with a professional educational management firm like White Hat Management was an attractive option. By managing multiple schools, the Company is able to gain operational efficiencies that are more difficult to achieve in a stand-alone school. In November 2005, the School renewed its management agreement with White Hat and its affiliates. (See Note 7 for a full description of services provided by the Company.)

As discussed later, the School was funded on 233 full-time equivalent students for fiscal year 2011. As of the date of this letter, it is expected that the School will maintain that enrollment with the possibility of a slight decline consistent with declines seen in other Life Skills Centers throughout the State. Obviously, any decline in enrollment would have a direct corresponding impact to current year revenues.

As a result of legislative changes, management companies that operate schools in the State of Ohio are required to provide more disclosure on how monies paid by the School to the company are spent. Auditor of State Bulletin No. 2004-009 provided the guidelines of how management companies are expected to comply with this new provision and Note 8 to the basic financial statements under the Financial Section includes the required information for fiscal year ended June 30, 2011.

Awards and Acknowledgements

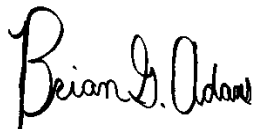
The Government Finance Officers Association of the United States and Canada (GFOA) awarded a Certificate of Achievement for Excellence in Financial Reporting to the Life Skills Center of Middletown for its CAFR for the year ended June 30, 2010. The School has received the award annually since 2004. The School was also acknowledged by the Ohio Department of Education as being one of the first community schools in the State to ever receive such an award. The Certificate of Achievement is a prestigious national award, recognizing conformance with the highest standards for preparation of state and local government financial reports.

In order to be awarded a Certificate of Achievement, a government unit must publish an easily readable and effectively organized CAFR, whose contents conform to program standards. The CAFR must satisfy both generally accepted accounting principles and applicable legal requirements. A Certificate of Achievement is valid for a period of one year only. We believe our current report, which is included herein, will conform to the high standards required by the Certificate of Achievement program.

The Comprehensive Annual Financial Report was prepared by the fiscal management team for the School. Their commitment to this process has helped to make this report possible. We would also like to thank Mr. Hale and other members of the Board of Directors and Finance Committee for their support in this endeavor. It is truly appreciated.

Finally, we would like to thank our School community for entrusting us with the education of your children. You are the reason we are here. We are committed to bettering our students, their parents, and the communities we serve by providing the very best alternative in public education.

Sincerely,



Brian G. Adams MBA, CMA, CFM, CGFM  
Fiscal Officer/Internal Auditor  
Life Skills Center of Middletown



Rodney Hale  
President, Board of Directors  
Life Skills Center of Middletown

Life Skills Center of Middletown  
Board of Directors  
June 30, 2011

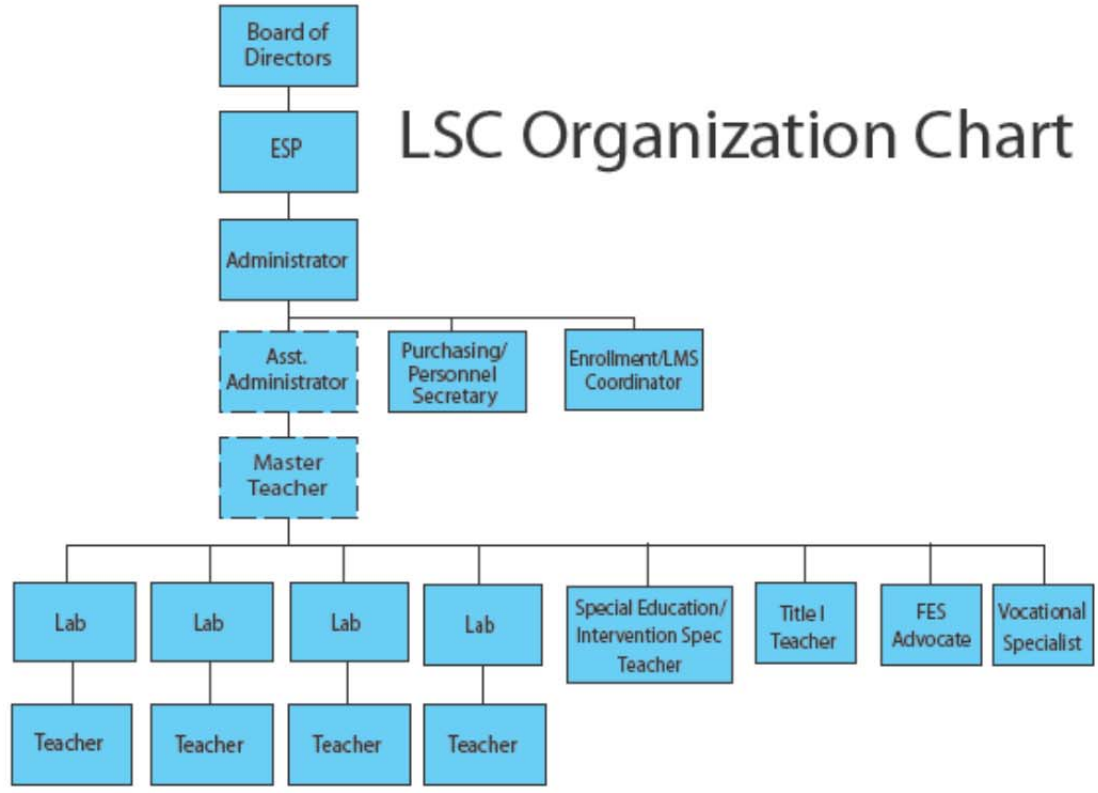
---

Rodney Hale  
Fredrick Shuemaker  
Deborah Dorsey  
Robert McIntosh  
Sharon Green  
Nicole Barnes  
Bridgette Stephenson

Board President  
Board Member  
Board Member  
Board Member  
Board Member  
Board Member  
Board Member



# LSC Organization Chart



 Optional Based on School Size

Education that fits your life

# Certificate of Achievement for Excellence in Financial Reporting

Presented to

Life Skills Center  
of Middletown, Ohio

For its Comprehensive Annual  
Financial Report  
for the Fiscal Year Ended  
June 30, 2010

A Certificate of Achievement for Excellence in Financial Reporting is presented by the Government Finance Officers Association of the United States and Canada to government units and public employee retirement systems whose comprehensive annual financial reports (CAFRs) achieve the highest standards in government accounting and financial reporting.



*Linda C. Danison*

President

*Jeffrey R. Enow*

Executive Director

# Financial Section

**This page intentionally left blank.**



December 15, 2011

To the Board of Directors  
Life Skills Center of Middletown  
631 South Breiel Road  
Middletown, Ohio 45044

### **INDEPENDENT AUDITOR'S REPORT**

We have audited the accompanying financial statements of the Life Skills Center of Middletown (the School), as of and for the year ended June 30, 2011, which collectively comprise the School's basic financial statements as listed in the table of contents. These financial statements are the responsibility of the School's management. Our responsibility is to express an opinion on these financial statements based on our audit.

We conducted our audit in accordance with auditing standards generally accepted in the United States of America and the standards applicable to financial audits contained in *Government Auditing Standards*, issued by the Comptroller General of the United States. Those standards require that we plan and perform the audit to obtain reasonable assurance about whether the financial statements are free of material misstatement. An audit includes examining, on a test basis, evidence supporting the amounts and disclosures in the financial statements. An audit also includes assessing the accounting principles used and significant estimates made by management, as well as evaluating the overall financial statement presentation. We believe that our audit provides a reasonable basis for our opinion.

In our opinion, the financial statements referred to above present fairly, in all material respects, the respective financial position of Life Skills Center of Middletown, as of June 30, 2011, and the respective changes in financial position and cash flows for the year then ended in conformity with accounting principles generally accepted in the United States of America.

In accordance with *Government Auditing Standards*, we have also issued our report dated December 15, 2011 on our consideration of the School's internal control over financial reporting and our tests of its compliance with certain provisions of laws, regulations, contracts and grant agreements and other matters. The purpose of that report is to describe the scope of our testing of internal control over financial reporting and compliance and the results of that testing, and not to provide an opinion on the internal control over financial reporting or on compliance. That report is an integral part of an audit performed in accordance with *Government Auditing Standards* and should be considered in assessing the results of our audit.

The Management's Discussion and Analysis on pages 3 through 6 are not a required part of the basic financial statements but is supplementary information required by the Governmental Accounting Standards Board. We have applied certain limited procedures, which consisted principally of inquiries of management regarding the methods of measurement and presentation of the required supplementary information. However, we did not audit the information and express no opinion on it.

We conducted our audit to opine on the financial statements that collectively comprise the School's basic financial statements. The introductory and statistical sections provide additional information and are not a required part of the basic financial statements. We did not subject the introductory and statistical sections to the auditing procedures applied in the audit of the basic financial statements and, accordingly, we express no opinion on them.

*Rea & Associates, Inc.*

**LIFE SKILLS CENTER OF MIDDLETOWN  
BUTLER COUNTY**

**MANAGEMENT'S DISCUSSION AND ANALYSIS  
FOR THE YEAR ENDED JUNE 30, 2011  
(Unaudited)**

The discussion and analysis of the Life Skills Center of Middletown's (the School) financial performance provides an overall review of the School's financial activities for the fiscal year ended June 30, 2011. The intent of this discussion and analysis is to look at the School's financial performance as a whole; readers should also review the transmittal letter, the basic financial statements and the notes to the basic financial statements to enhance their understanding of the School's financial performance.

The Management's Discussion and Analysis (MD&A) is an element of the reporting model adopted by the Governmental Accounting Standards Board (GASB) in their Statement No. 34 *Basic Financial Statements and Management's Discussion and Analysis for State and Local Governments* issued June 1999. Certain comparative information between the current year and the prior year is required to be presented in the MD&A.

**Financial Highlights**

- In total, net assets decreased \$84,971, which represents a 27.8 percent decrease from 2010. The decrease is due to increased operating costs for Supplemental Education Services
- Total assets decreased \$142,407, which represents a 34.6 percent decrease from 2010. This was primarily due to a decrease in continuing fees receivables from the previous year.
- Liabilities decreased \$57,436, which represents a 54.4 percent decrease from 2010. The decrease in liabilities is a direct result of the decrease in State Funding Payable.

**Using this Financial Report**

This report consists of three parts, the MD&A, the basic financial statements, and notes to those statements. The basic financial statements include a Statement of Net Assets, a Statement of Revenues, Expenses and Changes in Net Assets, and a Statement of Cash Flows.

The School uses enterprise presentation for all of its activities.

**Statement of Net Assets**

The Statement of Net Assets answers the question of how the School did financially during 2011. This statement includes all assets and liabilities, both financial and capital, and short-term and long-term using the accrual basis of accounting and economic resources focus, which is similar to the accounting used by most private-sector companies. This basis of accounting takes into account all revenues and expenses during the year, regardless of when the cash is received or paid.

**LIFE SKILLS CENTER OF MIDDLETOWN  
BUTLER COUNTY**

**MANAGEMENT'S DISCUSSION AND ANALYSIS  
FOR THE YEAR ENDED JUNE 30, 2011  
(Unaudited)**

Table 1 provides a summary of the School's net assets for fiscal years 2011 and 2010.

(Table 1)  
**Statement of Net Assets**

	<u>2011</u>	<u>2010</u>
<b>Assets</b>		
Current Assets	<u>\$269,192</u>	<u>\$411,599</u>
<b>Liabilities</b>		
Current Liabilities	<u>48,133</u>	<u>105,569</u>
<b>Net Assets</b>		
Unrestricted	<u>221,059</u>	<u>306,030</u>
Total Net Assets	<u>\$221,059</u>	<u>\$306,030</u>

Total assets decreased \$142,407, which represents a 34.6 percent decrease from 2010. This was primarily due to a decrease in continuing fees receivables from the previous year. Liabilities decreased \$57,546, which represents a 54.4 percent decrease from 2010. The decrease in liabilities is a direct result of the decrease in State Funding Payable. Under the terms of the management agreement, WHLS is paid a specific percentage of the State and Federal revenues the School receives.

**Statement of Revenues, Expenses and Changes in Net Assets**

Table 2 shows the changes in net assets for fiscal years 2011 and 2010, as well as a listing of revenues and expenses. This change in net assets is important because it tells the reader that, for the School as a whole, the financial position of the School has improved or diminished. The cause of this may be the result of many factors, some financial, some not. Non-financial factors include the current laws in Ohio restricting revenue growth, facility conditions, required educational programs and other factors.

**LIFE SKILLS CENTER OF MIDDLETOWN  
BUTLER COUNTY**

**MANAGEMENT'S DISCUSSION AND ANALYSIS  
FOR THE YEAR ENDED JUNE 30, 2011  
(Unaudited)**

(Table 2)  
**Change in Net Assets**

	<u>2011</u>	<u>2010</u>
<b>Operating Revenues</b>		
State Aid	\$1,603,889	\$1,892,240
<b>Non-Operating Revenue</b>		
Grants	487,087	450,271
Interest Income	1,813	2,112
Total Revenues	<u>2,092,789</u>	<u>2,344,623</u>
<b>Operating Expenses</b>		
Purchased Services: Management Fees	1,500,496	1,795,210
Purchased Services: Grant Programs	420,317	450,272
Supplemental Education Services	90,890	-
Instructional Services	66,770	-
Sponsorship Fees	47,550	18,922
Legal	15,220	11,069
Auditing & Accounting	24,865	23,946
Insurance	1,309	1,292
Board of Education	6,470	4,751
Depreciation	-	424
Miscellaneous	3,873	3,519
<b>Non-Operating Expenses</b>		
Settlement Expense	-	17,500
Total Expenses	<u>2,177,760</u>	<u>2,326,905</u>
 Change in Net Assets	 <u><u>\$ (84,971)</u></u>	 <u><u>\$ 17,718</u></u>

Overall revenues from 2010 to 2011 decreased due to the decrease in enrollment. Enrollment declined from 268 in fiscal year 2010 to 233 in 2011. The School's most significant expenses, "Purchased Services- Management Fees" decreased as well because of the management agreement in place between the School and WHLS. As stated previously, the agreement provides that specific percentages of the revenues received by the School will be paid to WHLS to fund operations. (See Notes to the Basic Financial Statements, Note 7) This decrease is due to the foundations and grant receipts.

**Budgeting Highlights**

Unlike other public schools located in the State of Ohio, community schools are not required to follow budgetary provisions set forth in Ohio Rev. Code Chapter 5705, unless specifically provided in the community school's contract with its Sponsor. The contract between the School and its Sponsor does prescribe a budgetary process. The School has developed a one year spending plan and a five-year forecast that is reviewed periodically by the Board of Directors. The five-year forecasts are also submitted to the Sponsor and the Ohio Department of Education.

**LIFE SKILLS CENTER OF MIDDLETOWN  
BUTLER COUNTY**

**MANAGEMENT'S DISCUSSION AND ANALYSIS  
FOR THE YEAR ENDED JUNE 30, 2011  
(Unaudited)**

**Capital Assets**

At the end of fiscal year 2011 the School had no capital assets, for more information on capital assets, see note 17 in the Notes to the basic financial statements.

**Current Financial Issues**

The Life Skills Center of Middletown received revenue for 233 students in 2011 (a decrease from 2010 of 35 and continues to enroll students on a daily basis. State law governing community schools allows for the School to have open enrollment across traditional school district boundaries. The School receives its support almost entirely from State Aid. Per pupil revenue from State Aid for the School averaged \$6,884 in fiscal year 2011. The School receives additional revenues from grant subsidies.

On July 1, 2005, the School contracted with the Saint Aloysius Orphanage as its sponsor. State law allows sponsors to assess the schools up to 3 percent of State revenues as an oversight fee. In June 2010, the School extended its contract with SAO through June 30, 2013. SAO will be paid three percent (3%) for the time period of July 1, 2010 through June 30, 2013, for all funds received by the School from the State of Ohio.

**Contacting the School's Financial Management**

This financial report is designed to provide our readers with a general overview of the School's finances and to show the School's accountability for the money it receives. If you have questions about this report or need additional information, contact Brian G. Adams, Fiscal Officer for the Life Skills Center of Middletown, 65 E. Wilson Bridge Road, Worthington, OH 43085 or e-mail at [badams@ocscltd.com](mailto:badams@ocscltd.com).

**LIFE SKILLS CENTER OF MIDDLETOWN  
BUTLER COUNTY**

**STATEMENT OF NET ASSETS  
JUNE 30, 2011**

**ASSETS**

**Current Assets**

Cash and Cash Equivalents	\$201,827
State Funding Receivable	19,910
Grants Funding Receivable	27,082
Receivable From School	1,171
Notes Receivable	<u>19,202</u>

**Total Assets** 269,192

**LIABILITIES**

**Current Liabilities**

Accounts Payable	951
Grants Funding Payable	28,253
Continuing Fees Payable	18,715
Payable to Schools	<u>214</u>

**Total Liabilities** 48,133

**Net Assets**

Unrestricted 221,059

**Total Net Assets** \$221,059

See accompanying notes to the basic financial statements

**LIFE SKILLS CENTER OF MIDDLETOWN  
BUTLER COUNTY**

**STATEMENT OF REVENUES,  
EXPENSES AND CHANGES IN NET ASSETS  
FOR THE FISCAL YEAR ENDED JUNE 30, 2011**

**OPERATING REVENUES**

State Aid \$1,603,889

**OPERATING EXPENSES**

Purchased Services: Management Fees	1,500,496
Purchased Services: Grant Programs	420,317
Supplemental Education Services	90,890
Instructional Services	66,770
Sponsorship Fees	47,550
Legal	15,220
Auditing and Accounting	24,865
Insurance	1,309
Board of Education	6,470
Miscellaneous	<u>3,873</u>

**Total Operating Expenses** 2,177,760

**Operating Loss** (573,871)

**NON-OPERATING REVENUE/(EXPENSES)**

Grants	487,087
Interest Income	<u>1,813</u>

**Total Non-Operating Revenue/(Expenses)** 488,900

**Change in Net Assets** (84,971)

Net Assets Beginning of Year 306,030

**Net Assets End of Year** \$ 221,059

See accompanying notes to the basic financial statements.



**LIFE SKILLS CENTER OF MIDDLETOWN  
BUTLER COUNTY**

**STATEMENT OF CASH FLOWS  
FOR THE FISCAL YEAR ENDED JUNE 30, 2011**

**INCREASE (DECREASE) IN CASH AND CASH EQUIVALENTS**

**CASH FLOWS FROM OPERATING ACTIVITIES**

Cash Received from State of Ohio	\$1,531,941
Cash Payments to Suppliers for Goods and Services	<u>(2,116,391)</u>

Net Cash Used For Operating Activities	<u>(584,450)</u>
--	------------------

**CASH FLOWS FROM NONCAPITAL FINANCING ACTIVITIES**

Cash Payments for Legal Settlements	(17,500)
Cash Received from Grant Programs	489,045

Net Cash Provided by Noncapital Financing Activities	<u>471,545</u>
--	----------------

**CASH FLOWS FROM CAPITAL FINANCING ACTIVITIES**

Cash Payments for Notes Receivable	<u>(19,202)</u>
------------------------------------	-----------------

**CASH FLOWS FROM INVESTING ACTIVITIES**

Cash Received from Interest on Investments	<u>1,813</u>
--	--------------

Net Decrease in Cash and Cash Equivalents	(130,294)
---	-----------

Cash and Cash Equivalents Beginning of Year	<u>332,121</u>
---	----------------

Cash and Cash Equivalents End of Year	<u>\$ 201,827</u>
---------------------------------------	-------------------

**RECONCILIATION OF OPERATING LOSS TO NET**

**CASH PROVIDED USED FOR OPERATING ACTIVITIES**

Operating Loss	\$ (573,871)
----------------	--------------

**ADJUSTMENTS TO RECONCILE OPERATING LOSS TO NET**

**CASH USED FOR OPERATING ACTIVITIES**

Changes in Assets and Liabilities:

State Funding Receivable	(19,910)
Continuing Fees Receivable	49,920
Sponsor Fee Receivable	520
Receivable from School	(1,171)
Accounts Payable	(2,297)
State Funding Payable	(52,038)
Grants Funding Payable	(786)
Continuing Fees Payable	18,715
Sponsor Fees Payable	(1,446)
Payable to Schools	<u>(2,086)</u>

Net Cash Used For Operating Activities	<u>\$ (584,450)</u>
--	---------------------

See accompanying notes to the basic financial statements

**This page intentionally left blank.**

**LIFE SKILLS CENTER OF MIDDLETOWN  
BUTLER COUNTY**

**NOTES TO THE BASIC FINANCIAL STATEMENTS  
FOR THE YEAR ENDED JUNE 30, 2011**

**1. DESCRIPTION OF THE SCHOOL AND REPORTING ENTITY**

Life Skills Center of Middletown (the School) is a state nonprofit corporation established pursuant to Ohio Rev. Code Chapters 3314 and 1702 to maintain and provide a school exclusively for any educational, literary, scientific and related teaching service. The School, which is part of the State's education program, is independent of any school district. The School may sue and be sued, acquire facilities as needed, and contract for any services necessary for the operation of the School.

The School contracts with LS Middletown, LLC, a Nevada limited liability company, for most of its functions. WHLS of Ohio, LLC, a Nevada limited liability company ("WHLS") d/b/a White Hat Management Company, is the sole member of LS Middletown, LLC and is the entity with which the School's board interacts regarding day-to-day operations (see note 7 for details).

The School was originally approved for operation under contract with the Ohio State Board of Education for a period of five years from May 16, 2000 through June 30, 2005. Effective July 1, 2005, House Bill 364 required schools sponsored by the Ohio Department of Education to have new sponsorship in place by June 30, 2005. The School signed a contract with a sponsor, Saint Aloysius Orphanage (Sponsor), to operate for a period from July 1, 2005 through June 30, 2010.

The School operates under a self-appointing, seven-member Board of Directors (the Board). The School's Code of Regulations specify that vacancies that arise on the Board will be filled by the appointment of a successor director by a majority vote of the then existing directors. The Board is responsible for carrying out the provisions of the contract with the Sponsor, which include, but are not limited to, state-mandated provisions regarding student population, curriculum, academic goals, performance standards, admission standards, and qualifications of teachers. The School began operations in September 2001 and has one instructional/support facility, which is leased by WHLS. The facility is staffed with teaching personnel employed by WHLS, who provide services to 233 students. The Board also operates and serves on the Life Skills Center of Springfield in the City of Springfield.

**2. SUMMARY OF SIGNIFICANT ACCOUNTING POLICIES**

The basic financial statements of the School have been prepared in conformity with generally accepted accounting principles as applied to governmental nonprofit organizations. The Governmental Accounting Standards Board (GASB) is the accepted standard-setting body for establishing governmental accounting and financial reporting principles. The School also applies Financial Accounting Standards Board (FASB) statements and interpretations issued on or before November 30, 1989, provided they do not conflict with GASB pronouncements. The School does not apply FASB statements and interpretations issued after November 30, 1989. The more significant of the School's accounting policies are described below.

**A. Basis of Presentation**

The School's basic financial statements consist of a Statement of Net Assets, a Statement of Revenues, Expenses and Changes in Net Assets, and a Statement of Cash Flows. Enterprise fund reporting focuses on the determination of the change in net assets, financial position and cash flows.

**LIFE SKILLS CENTER OF MIDDLETOWN  
BUTLER COUNTY**

**NOTES TO THE BASIC FINANCIAL STATEMENTS  
FOR THE YEAR ENDED JUNE 30, 2011  
(Continued)**

**2. SUMMARY OF SIGNIFICANT ACCOUNTING POLICIES (Continued)**

**A. Basis of Presentation (Continued)**

Auditor of State of Ohio Bulletin No. 2000-005 requires the presentation of all financial activity to be reported within one enterprise fund for year-end reporting purposes. Enterprise accounting is used to account for operations that are financed and operated in a manner similar to private business enterprises where the intent is that the costs (expenses) of providing goods or services to the general public on a continuing basis be financed or recovered primarily through user charges.

**B. Measurement Focus and Basis of Accounting**

The accounting and financial reporting treatment applied to a fund is determined by its measurement focus. Enterprise accounting uses a flow of economic resources measurement focus. With this measurement focus, all assets and all liabilities are included on the Statement of Net Assets. Operating statements present increases (i.e., revenues) and decreases (i.e., expenses) in net total assets. The accrual basis of accounting is utilized for reporting purposes. Revenues are recognized when they are earned, and expenses are recognized when they are incurred.

**C. Budgetary Process**

Unlike traditional public schools located in the State of Ohio, community schools are not required to follow budgetary provisions set forth in Ohio Rev. Code Section 5705, unless specifically provided in the school's contract with its sponsor. The contract between the School and its Sponsor requires a detailed school budget for each year of the contract. In addition, the Board adopted an operating budget at the beginning of fiscal year 2011. However, the budget does not have to follow the provisions of Ohio Rev. Code Section 5705, except for section 5705.391 as it relates to five-year forecasts.

**D. Cash and Cash Equivalents**

All cash received by the School is maintained in a demand deposit account, money market account, and STAROhio. For purposes of the Statement of Cash Flows and for presentation on the Statement of Net Assets, investments with an original maturity of three months or less at the time they are purchased are considered to be cash equivalents.

During fiscal year 2011, investments were limited to the State Treasurer's Investment Pool, STAROhio. STAROhio is an investment pool managed by the State Treasurer's Office, which allows governments within the State to pool their funds for investment purposes. STAROhio is not registered with the SEC as an investment company, but does operate in a manner consistent with Rule 2a7 of the Investment Company Act of 1940. Investments in STAROhio are valued at STAROhio's share price, which is the price the investment could be sold for on June 30, 2011.

**LIFE SKILLS CENTER OF MIDDLETOWN  
BUTLER COUNTY**

**NOTES TO THE BASIC FINANCIAL STATEMENTS  
FOR THE YEAR ENDED JUNE 30, 2011  
(Continued)**

**2. SUMMARY OF SIGNIFICANT ACCOUNTING POLICIES (Continued)**

**E. Intergovernmental Revenues**

The School currently participates in the State Foundation Program, the State Disadvantaged Pupil Impact Aid (DPIA) Program, and the Career Based Intervention (CBI) Program, which are reflected under "State Aid" on the Statement of Revenues, Expenses and Changes in Net Assets. Revenues received from these programs are recognized as operating revenues in the accounting period in which all eligibility requirements have been met.

Non-exchange transactions, in which the School receives value without directly giving equal value in return, include grants, entitlements, and contributions. Grants, entitlements, and contributions are recognized as non-operating revenues in the accounting period in which all eligibility requirements have been met.

Eligibility requirements include timing requirements, which specify the year when the resources are required to be used or the fiscal year when use is first permitted; matching requirements, in which the School must provide local resources to be used for a specified purpose; and expenditure requirements, in which the resources are provided to the School on a reimbursement basis. Amounts awarded under the above programs for the 2011 school year totaled \$2,090,976.

**F. Capital Assets and Depreciation**

For purposes of recording capital assets, the Board has a capitalization threshold of \$5,000.

For fiscal year 2011, the Schools' capital assets were fully depreciated. Depreciation is computed by the straight-line method three years for "Computers and Software".

The School has no other capital assets, as the School operates under a management agreement with WHLS. (See Note 7)

**G. Use of Estimates**

In preparing the financial statements, management is sometimes required to make estimates and assumptions that affect the reported amounts of assets and liabilities, the disclosure of contingent assets and liabilities at the date of the financial statements, and the reported amounts of revenues and expenses during the reporting period. Actual results could differ from those estimates.

**H. Net Assets**

Net assets represent the difference between assets and liabilities. Net assets consist of unrestricted net assets.

**I. Operating Revenues and Expenses**

Operating revenues are those revenues that are generated directly from the School's primary activities. For the School, these revenues are primarily State Aid payments. Operating expenses are necessary costs incurred to provide the goods and services that are the primary activities of the School. Revenues and expenses not meeting this definition are reported as non-operating.

**LIFE SKILLS CENTER OF MIDDLETOWN  
BUTLER COUNTY**

**NOTES TO THE BASIC FINANCIAL STATEMENTS  
FOR THE YEAR ENDED JUNE 30, 2011  
(Continued)**

**3. DEPOSITS AND INVESTMENTS**

**A. Deposits with Financial Institutions**

At June 30, 2011, the carrying amount of all School deposits was \$199,926 and its bank balance was \$202,326. Based on the criteria described in GASB Statement No. 40, "Deposits and Investment Risk Disclosures", as of June 30, 2011, all of the bank balance was covered by the Federal Deposit Insurance Corporation (FDIC).

The investment and deposit of the School's monies is governed by the provisions of the ORC. In accordance with these statutes, the School is authorized to invest in United States and State of Ohio bonds, notes, and other obligations; bank certificates of deposit and STAR Ohio.

Custodial credit risk is the risk that, in the event of bank failure, the School's deposits may not be returned. The School has no deposit policy for custodial credit risk beyond the requirements of state statute. According to state law, public depositories must give security for all public funds on deposits. All deposits are collateralized with eligible securities in amounts equal to at least 105 percent of the carrying value of the deposits. Such collateral, as permitted by the Ohio Revised Code, is held in single financial institution collateral pools at Federal Reserve Banks, or at member banks of the federal reserve system, in the name of the respective depository bank and pledged as a pool of collateral against all of the public deposits it holds or as specific collateral held at the Federal Reserve Bank in the name of the School. State law does not require security for public deposits and investments to be maintained in the School's name. During 2011, the School and public depositories complied with the provisions of these statutes.

**B. Investments**

As of June 30, 2011, the School had the following investments and maturities:

<u>Investment Type</u>	<u>Balance at Fair Value</u>	<u>Investment Maturities</u>		
		<u>6 months or less</u>	<u>7 to 12 months</u>	<u>Greater than 12 months</u>
STAROhio	\$1,901	\$1,901	\$ -	\$ -

*Interest Rate Risk:* As a means of limiting its exposure to fair value losses arising from rising interest rates and according to state law, the School's investment policy limits investment portfolio maturities to five years or less.

*Credit Risk:* The School's investments at June 30, 2011 in StarOhio are rated AAA by Standard & Poor's. Investments in Star Ohio are rated AAAM by Standard & Poor's.

*Concentration of Credit Risk:* The School places no limit on the amount that may be invested in any one issuer. The following table includes the percentage of each investment type held by the School at June 30, 2011:

<u>Investment Type</u>	<u>Fair Value</u>	<u>Percent to Total</u>
STAROhio	\$1,901	100.00

**LIFE SKILLS CENTER OF MIDDLETOWN  
BUTLER COUNTY**

**NOTES TO THE BASIC FINANCIAL STATEMENTS  
FOR THE YEAR ENDED JUNE 30, 2011  
(Continued)**

**4. CONTINUING FEES PAYABLE**

A "Continuing Fees Receivable" from WHLS has been recorded by the School in the amount of \$19,910. The balance was due to the FTE audit performed by the Ohio Department of Education (ODE) (see note 15). This receivable represents 94 percent of the State Funding Receivable due from ODE.

**5. GRANTS FUNDING RECEIVABLE/PAYABLE**

The School has recorded "Grants Funding Receivable" in the amount of \$27,082 to account for the remainder of State and Federal awards allocated to the School, but not received as of June 30, 2011. Additionally, under the terms of the management agreement (See Note 7), the School has recorded "Grants Funding Payable" to WHLS in the amount of \$28,253 for 100 percent of any State and Federal monies uncollected and/or unpaid to WHLS as of June 30, 2011.

**6. RISK MANAGEMENT**

**Property and Liability** - The School is exposed to various risks of loss related to torts; theft or damage to, and destruction of assets; errors and omissions; injuries to employees; and natural disasters. As part of its management agreement with WHLS, WHLS has contracted with an insurance company for property and general liability insurance pursuant to the Management Agreement (See Note 7). There was no significant reduction in insurance coverage from the prior year and claims have not exceeded insurance coverage over the past three years.

**Director and Officer** - Coverage has been purchased by the School with a \$1,000,000 aggregate limit and a \$2,500 deductible.

**7. AGREEMENT WITH WHLS**

Effective November 1, 2005, the School entered into a multi-year Management Agreement (Agreement) with WHLS (through its subsidiary LS Middletown, LLC), which is an educational consulting and management company. The Agreement's term ran through June 30, 2008, was renewed for a one year term ending June 30, 2010, and will renew for additional one year terms ending on June 30, 2011 unless terminated for cause by either party. In June 2010, the school signed a new 3-year agreement for services. Substantially all functions of the School have been contracted to WHLS. WHLS is responsible and accountable to the School's Board of Directors for the administration and day-to-day operations. As part of the terms of this agreement, the "Continuing Fee" percentage of the School is 94 percent. "Continuing Fees" are defined in the Agreement as, "...the revenue per student received by the School from the State of Ohio Department of Education pursuant to Title 33 and other provisions of the Ohio Revised Code...". With regard to grant funding, the agreement reads as follows: "Federal Title Programs, lunch programs revenue, and other such federal, state and local government grant funding designated to compensate the school for the education of its students shall be fully paid to the Company." The continuing fee is paid to WHLS based on the previous month's qualified gross revenues. As such, WHLS receives 94 percent of "State Aid" (See Note 2 E) and 100 percent of all other federal, state, and local grants. The School retains 6 percent of the "State Aid" as well as miscellaneous revenues generated from interest on deposits and donations.

The School had purchased service expenses for the year ended June 30, 2011, to WHLS of \$1,920,813, receivables of \$19,910, and payables to WHLS at June 30, 2011 aggregating \$28,253. WHLS is responsible for all costs incurred in providing the educational program at the School, which include but are not limited to, salaries and benefits of all personnel, curriculum materials, textbooks, library books, computers and other equipment, software, supplies, building payments, maintenance, capital, and insurance.

**LIFE SKILLS CENTER OF MIDDLETOWN  
BUTLER COUNTY**

**NOTES TO THE BASIC FINANCIAL STATEMENTS  
FOR THE YEAR ENDED JUNE 30, 2011  
(Continued)**

**8. MANAGEMENT COMPANY EXPENSES**

For the year ended June 30, 2011, White Hat Ventures, LLC and its affiliates incurred the following expenses on-behalf of the School.

	<b>2011</b>
<b>Expenses</b>	
<b>Direct Expenses:</b>	
Salaries & wages	\$ 673,635
Employees' benefits	217,595
Professional & technical services	298,787
Property services	222,352
Travel	4,266
Communications	5,853
Utilities	60,293
Books, periodicals, & films	2,394
Food & Related Supplies	26,775
Other supplies	103,701
Depreciation	23,115
Other direct costs	40,021
<b>Indirect Expenses:</b>	
Overhead	401,650
<b>Total Expenses</b>	<b>\$ 2,080,437</b>

Overhead charges are assigned to the School based on a percentage of revenue. These charges represent the indirect cost of services provided in the operation of the School. Such services include, but are not limited to facilities management, equipment, operational support services, management and management consulting, board relations, human resources management, training and orientation, financial reporting and compliance, purchasing and procurement, education services, technology support and marketing and communications.

**9. DEFINED BENEFIT PENSION PLANS**

The School has contracted with WHLS to provide employee services and to pay those employees. However, these contract services do not relieve the School of the obligation for remitting pension contributions. The retirement systems consider the School as the Employer-of-Record and the School ultimately responsible for remitting retirement contributions to each of the systems noted below: (See Note 7)

**A. School Employees Retirement System**

**Plan Description** - WHLS, on behalf of the School, contributes to the School Employees Retirement System (SERS), a cost-sharing multiple employer pension plans. SERS provides retirement and disability benefits, annual cost-of-living adjustments, and death benefits to plan members and beneficiaries. Authority to establish and amend benefits is provided by Chapter 3309 of the Ohio Revised Code. SERS issues a publicly available, stand-alone financial report that includes financial statements and required supplementary information. That report may be obtained by contacting School Employees Retirement System, 300 East Broad Street, Suite 100, Columbus, Ohio 43215-3746, or by calling toll free 1-800-878-5853. It is also



**LIFE SKILLS CENTER OF MIDDLETOWN  
BUTLER COUNTY**

**NOTES TO THE BASIC FINANCIAL STATEMENTS  
FOR THE YEAR ENDED JUNE 30, 2011  
(Continued)**

**9. DEFINED BENEFIT PENSION PLANS (Continued)**

**A. School Employees Retirement System**

posted at the SERS' website at [www.ohsers.org](http://www.ohsers.org) under Employer/ Audit Resources.

**Funding Policy** - Plan members are required to contribute 10 percent of their annual covered salary and the The School is required to contribute 14 percent of annual covered payroll. The contribution requirements of plan members and employers are established and may be amended by the SERS' Retirement Board up to a statutory maximum amount by the SERS' Retirement Board. The Retirement Board acting with the advice of the actuary, allocates the employer contribution rate among four of the funds (Pension Trust Fund, Death Benefit Fund, Medicare B and Health Care Fund) of the System. For the fiscal year ending June 30, 2011, the allocation to pension and death benefits is 11.81 percent. The remaining 2.19 percent of the School contributions to SERS for the year ended June 30, 2011, 2010 and 2009 were \$7,698, \$10,477, and \$8,147, respectively, which equaled the required contributions each year.

**B. State Teachers Retirement System**

**Plan Description** – WHLS, on behalf of the School, contributes to the State Teachers Retirement System of Ohio (STRS Ohio), which is a cost-sharing, multiple-employer public employee retirement system. STRS Ohio provides retirement and disability benefits to members and death and survivor benefits to beneficiaries. STRS Ohio issues a stand-alone financial report, which may be obtained by writing to STRS Ohio, 275 East Broad Street, Columbus, Ohio 43215-3771, by calling (888) 227-7877, or by visiting the STRS Ohio website at [www.strsoh.org](http://www.strsoh.org).

New members have a choice of three retirement plans, a Defined Benefit (DB) Plan, a Defined Contribution (DC) Plan, and a Combined Plan. The DB plan offers an annual retirement allowance based on final average salary times a percentage that varies based on years of service, or an allowance based on member's lifetime contributions and earned interest matched by STRS Ohio funds divided by an actuarially determined annuity factor. The DC Plan allows members to place all their member contributions and employer contributions equal to 10.5 percent of earned compensation into an investment account. Investment decisions are made by the member. A member is eligible to receive a retirement benefit at age 50 and termination of employment. The member may elect to receive a lifetime monthly annuity or a lump sum withdrawal. The Combined Plan offers features of both the DB Plan and the DC Plan.

In the Combined Plan, member contributions are invested by the member, and employer contributions are used to fund the defined benefit payment at a reduced level from the regular DB Plan. The DB portion of the Combined Plan payment is payable to a member on or after age 60; the DC portion of the account may be taken as a lump sum or converted to a lifetime monthly annuity at age 50. Benefits are established by Chapter 3307 of the Ohio Revised Code.

A DB or Combined Plan member with five or more years credited service who becomes disabled may qualify for a disability benefit. Eligible spouses and dependents of these active members who die before retirement may qualify for survivor benefits. Members in the DC Plan who become disabled are entitled only to their account balance. If a member dies before retirement benefits begin, the member's designated beneficiary is entitled to receive the member's account balance.

**LIFE SKILLS CENTER OF MIDDLETOWN  
BUTLER COUNTY**

**NOTES TO THE BASIC FINANCIAL STATEMENTS  
FOR THE YEAR ENDED JUNE 30, 2011  
(Continued)**

**9. DEFINED BENEFIT PENSION PLANS (Continued)**

**B. State Teachers Retirement System**

**Funding Policy** - For the fiscal year ended June 30, 2011, plan members were required to contribute 10 percent of their annual covered salaries. The School was required to contribute 14 percent; 13 percent was the portion used to fund pension obligations. For fiscal year 2010, the portion used to fund pension obligations was also 13 percent. Contribution rates are established by the State Teachers Retirement Board, upon recommendations of its consulting actuary, not to exceed statutory maximum rates of 10 percent for members and 14 percent for employers. Chapter 3307 of the Ohio Revised Code provides statutory authority for member and employer contributions.

This is the latest information available.

The School's required contribution for pension obligations to STRS for the fiscal years ended June 30, 2011, 2010 and 2009 were \$80,414, \$82,940, and \$64,939, respectively, of which 100% has been contributed. Contributions to the DB and combined plans for fiscal year 2011 were \$64,224 made by the school and \$45,875 made by the plan members.

**C. Social Security System**

Effective July 1, 1991, all employees not otherwise covered by the School Employees Retirement System or the State Teachers Retirement System of Ohio have an option to choose Social Security or the School Retirement System. As of June 30, 2011, there were no members that elected Social Security. The contribution rate is 6.2 percent of wages.

**10. POSTEMPLOYMENT BENEFITS**

**A. School Employee Retirement Systems**

In addition to a cost-sharing multiple-employer defined pension plan the School Employees Retirement System of Ohio (SERS) administers two post employment benefit plans.

**Medicare Part B**

Medicare B plan reimburse Medicare B premiums paid by eligible retirees and beneficiaries as set forth in Ohio Revised Code (ORC) 3309.69. Qualified benefits recipients who pay Medicare Part B premiums may apply for and receive a monthly reimbursement from SERS. The reimbursement amount is limited by statute to the lesser of the January 1, 1999 Medicare Part premium or the current premium. The Medicare Part B premium for calendar year 2011 was \$96.40; SERS' reimbursement for retirees was \$45.50.

The Retirement Board, acting with the advice of the actuary, allocates a portion of the current employer contribution rate to the Medicare B Fund. For fiscal 2011, the actuarial required allocation is .76 percent. WHLS contributions for the years ended June 30, 2011, 2010 and 2009 were \$495, \$623, and \$672, respectively, of which 100% has been contributed.

**Health Care Plan**

ORC 3309.375 and 3309.69 permit SERS to offer health care benefits to eligible retirees and beneficiaries. SERS' Retirement Board reserves the right to change or discontinue any health plan or program. SERS offers several types of health plans from various vendors, including

**LIFE SKILLS CENTER OF MIDDLETOWN  
BUTLER COUNTY**

**NOTES TO THE BASIC FINANCIAL STATEMENTS  
FOR THE YEAR ENDED JUNE 30, 2011  
(Continued)**

**10. POSTEMPLOYMENT BENEFITS (Continued)**

**A. School Employee Retirement Systems (Continued)**

HMO's, PPO's, Medicare Advantage, and traditional indemnity plans. A prescription drug program is also available to those who elect health coverage. SERS employs two third-party administrators and a pharmacy benefit manager to manage the self-insurance and prescription drug plans, respectively.

The ORC provides the statutory authority to fund SERS' postemployment benefits through employer contributions.

The Health Care Fund was established under, and is administered in accordance with the Internal Revenue Code 105(e). Each year after the allocation for statutorily required benefits, the Retirement Board allocates the remainder of the employer 14 percent contribution to the Health Care Fund. For the year ended June 30, 2011, the health care allocation is 1.43%. An additional health care surcharge on employers is collected for employees earning less than the actuarially determined minimum compensation amount, pro-rated according to service credit earned. Statutes provides that no employer shall pay a health care surcharge greater than 2 percent of that employer's SERS-covered payroll; nor may SERS collect in aggregate more than 1.5 percent of the total statewide SERS-covered payroll for the health care surcharge. For the fiscal year June 30, 2011, the minimum compensation level was established at \$35,800. The surcharge added to the unallocated portion of the 14 percent employer contribution rate is the total amount assigned to the Health Care Fund. The Schools' contributions assigned to health care for the years ended June 30, 2011, 2010 and 2009 were \$1,634, \$1,795, and \$5,235, respectively, of which 100% has been contributed.

The SERS Retirement Board establishes the rules for the premiums paid by the retirees for health care coverage for themselves and their dependents or their surviving beneficiaries. Premiums vary depending on the plan selected, qualified years, Medicare eligibility, and retirement status.

The financial reports of SERS' Health Care and Medicare B plans are included in its *Comprehensive Annual Financial Report*. The report can be obtained by contacting SERS, 300 East Broad Street, Suite 100, Columbus, Ohio 43215-3746 or by calling toll free (800) 878-5853. It is also posted on the SERS' website [www.ohsers.org](http://www.ohsers.org) under **Employers/Audit Resources**.

**B. State Teachers Retirement System**

**Plan Description** – WHLS, on behalf of the School contributes to the cost sharing multiple employer defined benefit Health Plan administered by the State Teachers Retirement System of Ohio (STRS Ohio) for eligible retirees who participated in the defined benefit or combined pension plans offered by STRS Ohio. Benefits include hospitalization, physicians' fees, prescription drugs and reimbursement of monthly Medicare Part B premiums. The Plan is included in the report of STRS Ohio which may be obtained by visiting [www.strsoh.org](http://www.strsoh.org) or by calling (888) 227-7877.

**LIFE SKILLS CENTER OF MIDDLETOWN  
BUTLER COUNTY**

**NOTES TO THE BASIC FINANCIAL STATEMENTS  
FOR THE YEAR ENDED JUNE 30, 2011  
(Continued)**

**10. POSTEMPLOYMENT BENEFITS (Continued)**

**B. State Teachers Retirement System**

**Funding Policy** - Ohio law authorizes STRS Ohio to offer the Plan and gives the Retirement Board authority over how much, if any, of the health care costs will be absorbed by STRS Ohio. Active employee members do not contribute to the Plan. All benefit recipients pay a monthly premium. Under Ohio law, funding for post-employment health care may be deducted from employer contributions. For 2011, STRS Ohio allocated employer contributions equal to 1 percent of covered payroll to the Health Care Stabilization Fund. The School's contributions for health care for the fiscal years ended June 30, 2011, 2010, and 2009 were \$6,186, \$6,380, and \$4,995, respectively; all of which has been contributed for all fiscal years.

**11. CONTINGENCES**

**A. Grants**

Amounts received from grantor agencies are subject to audit and adjustment by the grantor. Any disallowed costs may require refunding to the grantor. Amounts which may be disallowed, if any, are not presently determinable. However, in the opinion of the School, any such adjustments will not have a material adverse effect on the financial position of the School.

**B. Pending Litigation**

In October 2007, the School filed a lawsuit against Community Educational Partnerships (CEP) for matters related to their contract. CEP (in turn) countersued the School. The effect of this lawsuit is presently not determinable.

**C. Full Time Equivalency**

The Ohio Department of Education conducts reviews of enrollment data and full-time equivalency (FTE) calculations made by the schools. These reviews are conducted to ensure the schools are reporting accurate student enrollment data to the State, upon which state foundation funding is calculated. The results of this review were posted to the financial statements (see note 15).

**12. FEDERAL TAX STATUS**

The School was approved under § 501(c)(3) of the Internal Revenue Code as a tax exempt organization.

**13. SPONSORSHIP FEES**

The School contracted with Saint Aloysius Orphanage as its sponsor effective July 1, 2005. The School pays the Sponsor three percent of the State Aid. Total fees for fiscal year 2011 were \$47,550. The Sponsor provides oversight, monitoring, and technical assistance for the School.

In June 2010, the School extended its contract with SAO through June 30, 2013. SAO will be paid three percent (3%) for the time period of July 1, 2010 through June 30, 2013, of all funds received by the School from the State of Ohio.

**LIFE SKILLS CENTER OF MIDDLETOWN  
BUTLER COUNTY**

**NOTES TO THE BASIC FINANCIAL STATEMENTS  
FOR THE YEAR ENDED JUNE 30, 2011  
(Continued)**

**14. RECEIVABLES/PAYABLES TO SCHOOLS**

The School shares costs for certain professional services other Hope Academies and Life Skills Centers. As of June 30, 2011, the School has \$1,171 due from other schools (receivable) and \$214 (payable) for various payments made for these services.

**15. STATE FUNDING RECEIVABLE**

The School has recognized on its Statement of Net Assets a "State Funding Receivable" for the amount of State Aid directly related to FTE, estimated to be received by the School to the Ohio Department of Education (ODE) based on the difference in the amount the School actually received versus the amount earned through student FTE enrollment as determined at the end of the year. A payable reflects that the School was funded on a lower estimated enrollment figure throughout the year than what the actual FTE enrollment figure was calculated to be at year-end. At June 30, 2011, the amount of "State Funding Receivable" was \$19,910.

**16. NOTE RECEIVABLE**

The School made a loan to New Choices Community School in Dayton Ohio to assist them with meeting their operating obligations. Terms of the loan were Principal amount of \$38,000 and an interest rate of 4.5% per annum. The Loan was to be paid in 12 equal installments of \$3,204 beginning in December of 2010. The balance outstanding at June 30, 2011 is \$19,202.

**17. CAPITAL ASSETS AND DEPRECIATION**

For the year ended June 30, 2011, the School's capital assets consisted of the following:

	Balance			Balance
	<u>6/30/2010</u>	<u>Additions</u>	<u>Deletions</u>	<u>6/30/2011</u>
<b>Capital Assets Being Depreciated</b>				
Computers and Software	\$ 14,520		\$ -	\$ 14,520
Less: Accumulated Depreciation	<u>(14,520)</u>	<u>-</u>	<u>-</u>	<u>(14,520)</u>
<b>Total Capital Assets Being Depreciated, Net</b>	<u>\$ -</u>	<u>\$ -</u>	<u>\$ -</u>	<u>\$ -</u>

**This page intentionally left blank.**

# Statistical Section

# STATISTICAL SECTION

This part of the **Life Skills Center Middletown's** comprehensive annual financial report presents detailed information as a context for understanding what the information in the financial statements and note disclosures says about the School's overall financial health. This school has presented less than ten years of statistical data due to the fact that the school began operations in 2002 for certain statements.

## Contents

### ***Financial Trends***

This schedule contains trend information to help the reader understand how the School's overall expenses by class compared with the expenditure per pupil have changed over time.

- Operating Expenses by Category
- State Basic Aid – Per Pupil Funding

### ***Revenue Capacity***

This schedule contains information to help the reader assess the affordability of the School's most significant revenue sources the state aid and grants.

- Operating and Non-Operating Revenues

### ***Enrollment Trends***

This schedule contains information to help the reader understand the changes in enrollment over time.

- Full-Time Equivalent (FTE) Enrollment

### ***Revenue by Grants Sources***

This schedule contains information to help the reader understand the changes in revenues by grant source.

- Grant Revenues by Source

### ***Net Assets Trends***

This schedule offers information to help the reader understand the funds invested in capital assets versus the unrestricted funds remaining for future expenditures.

- Net Assets

### ***Demographic and Economic Information***

These schedules offer demographic and economic indicators to help the reader understand the environment within which the School's financial activities take place.

- Student Population by Resident District
- Miscellaneous Statistics

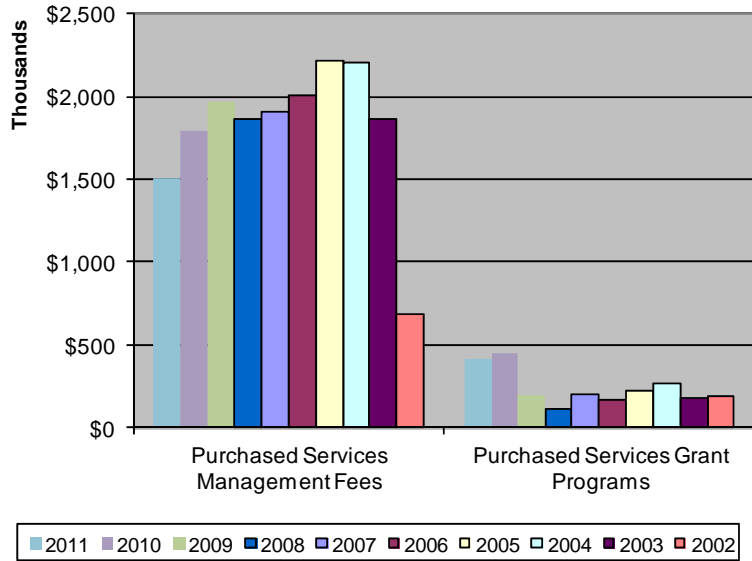
**Sources:** Unless otherwise noted, the information in these schedules is derived from the comprehensive annual financial reports for the relevant year. The School implemented GASB Statement 34 for the year ended June 30, 2004.



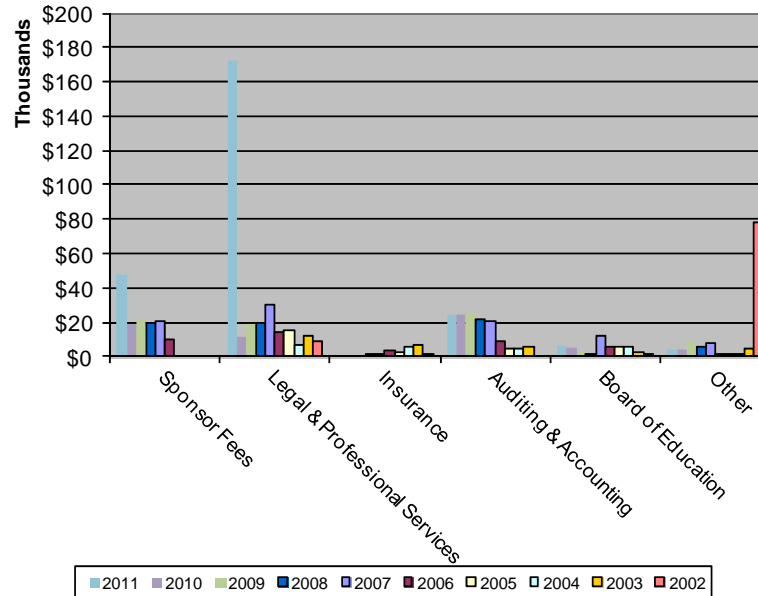
Life Skills Center of Middletown  
Operating Expenses by Category  
Last Ten Fiscal Years

Year	Purchased Services Management Fees	Purchased Services Grant Programs	Sponsor Fees	Legal & Professional Services	Insurance	Auditing & Accounting	Board of Education	Other	Total	Enrollment	Per Pupil Expenditure
2011	\$ 1,500,496	\$ 420,317	\$47,550	\$172,880	\$ 1,309	\$ 24,865	\$ 6,470	\$ 3,873	\$2,177,760	233	\$ 9,347
2010	\$ 1,795,210	\$ 450,272	\$18,922	\$ 11,069	\$ 1,292	\$ 23,946	\$ 4,751	\$ 3,943	\$2,309,405	268	\$ 8,617
2009	\$ 1,965,015	\$ 199,303	\$20,652	\$ 19,534	\$ 1,462	\$ 25,253	\$ 2,753	\$ 8,285	\$2,242,257	272	\$ 8,244
2008	\$ 1,864,095	\$ 117,974	\$19,622	\$ 19,542	\$ 1,390	\$ 21,654	\$ 582	\$ 5,542	\$2,050,401	280	\$ 7,323
2007	\$ 1,912,774	\$ 195,769	\$20,488	\$ 30,213	\$ 1,390	\$ 20,265	\$11,996	\$ 8,361	\$2,201,256	283	\$ 7,778
2006	\$ 2,004,354	\$ 166,945	\$10,200	\$ 14,171	\$ 3,503	\$ 9,239	\$ 5,851	\$ 1,078	\$2,215,341	304	\$ 7,287
2005	\$ 2,217,971	\$ 226,213	\$ -	\$ 15,440	\$ 2,552	\$ 5,124	\$ 5,796	\$ 436	\$2,473,532	321	\$ 7,706
2004	\$ 2,205,411	\$ 265,017	\$ -	\$ 6,849	\$ 5,692	\$ 5,145	\$ 5,671	\$ 499	\$2,494,284	354	\$ 7,046
2003	\$ 1,867,339	\$ 181,070	\$ -	\$ 11,916	\$ 6,300	\$ 5,500	\$ 2,563	\$ 4,309	\$2,078,997	307	\$ 6,772
2002	\$ 688,178	\$ 186,765	\$ -	\$ 8,473	\$ 593	\$ -	\$ 240	\$78,418	\$ 962,667	144	\$ 6,685

**Purchased Services Expenses By Fiscal Year**



**Other Operating Expenses by Fiscal Year**



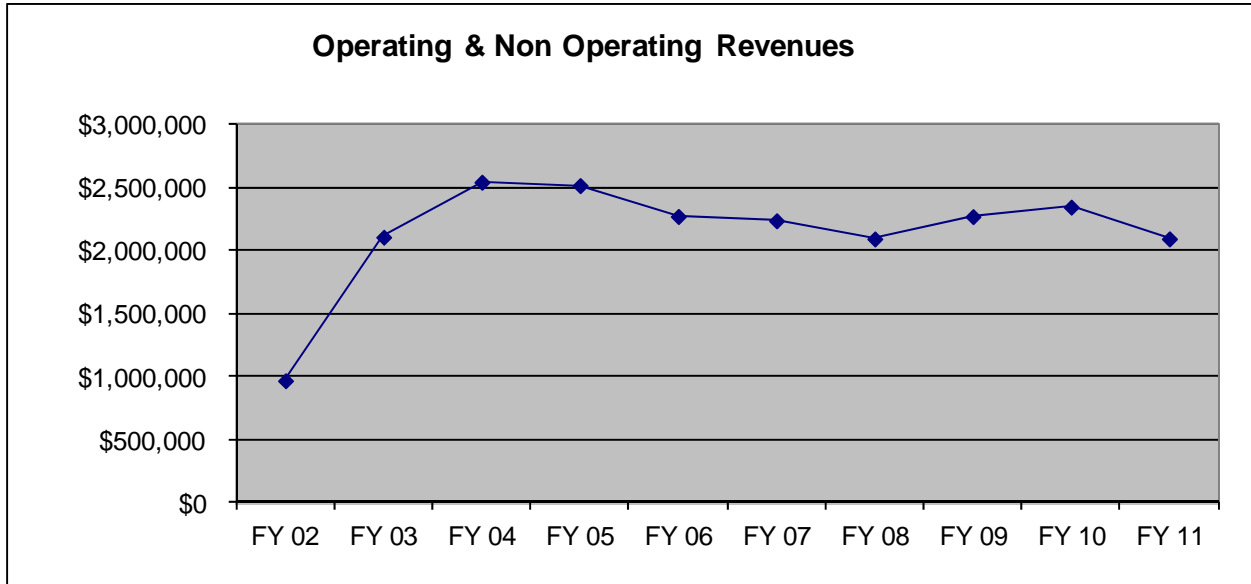
**Note 1:** On June 20, 2002, the School amended its management agreement with WHLS so that all facility costs would be paid by the management company in exchange for a higher management fee.

**Note 2:** The School began enrolling students in FY 02.

**Source:** School Financial Records

Life Skills Center of Middletown  
Operating and Non-Operating Revenues  
Last Ten Fiscal Years

<b>Year</b>	<b>State Aid</b>	<b>Grants</b>	<b>Other</b>	<b>Total</b>
2011	\$1,603,889	\$487,087	\$ 1,813	<b>\$2,092,789</b>
2010	\$1,892,240	\$450,271	\$ 2,112	<b>\$2,344,623</b>
2009	\$2,065,279	\$199,303	\$ 4,704	<b>\$2,269,286</b>
2008	\$1,962,206	\$117,973	\$12,187	<b>\$2,092,366</b>
2007	\$2,013,446	\$210,288	\$12,432	<b>\$2,236,166</b>
2006	\$2,096,605	\$166,945	\$ 7,095	<b>\$2,270,645</b>
2005	\$2,286,563	\$226,213	\$ 2,859	<b>\$2,515,635</b>
2004	\$2,276,181	\$265,017	\$ 1,047	<b>\$2,542,245</b>
2003	\$1,925,091	\$181,070	\$ -	<b>\$2,106,161</b>
2002	\$ 780,215	\$186,765	\$ -	<b>\$ 966,980</b>



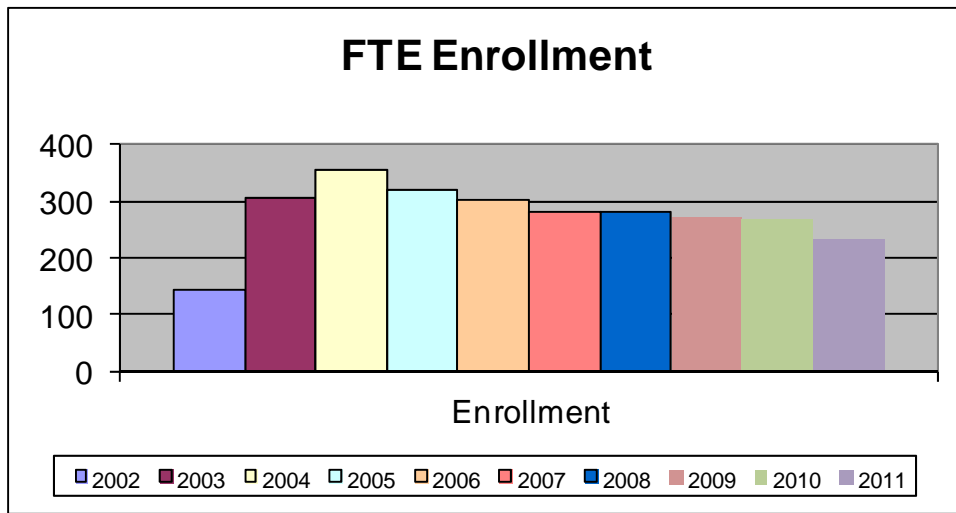
**Note: The School began enrolling students in FY 02.**

**Source: School Financial Records**

Life Skills Center of Middletown  
Full-Time Equivalent (FTE) Enrollment  
Last Ten Fiscal Years

---

<u>Year</u>	<u>Enrollment</u>
2011	233
2010	268
2009	272
2008	280
2007	283
2006	304
2005	321
2004	354
2003	307
2002	144



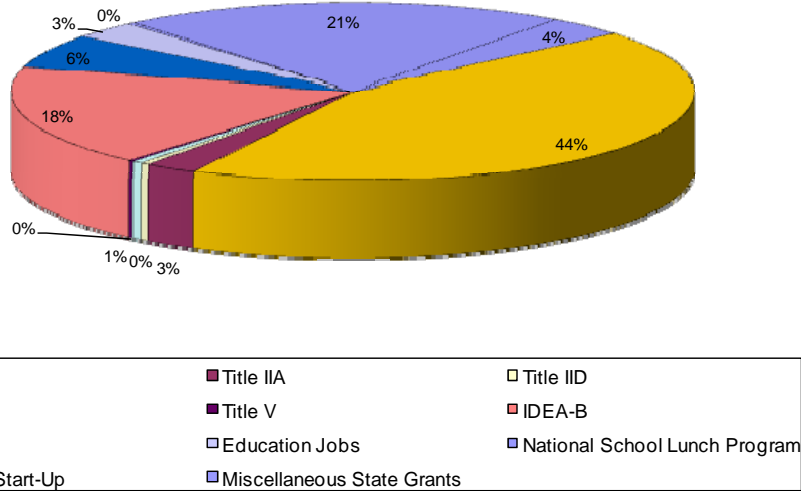
**Note: The School began enrolling students in FY 02.**

**Source: School Financial Records**

Life Skills Center of Middletown  
Grant Revenues by Source  
Last Ten Fiscal Years

Year	Title I	Title IIA	Title IID	Title IV	Title V	IDEA-B	State Stabilization	Education Jobs	National School Lunch	Federal Start-Up	Misc State Grants	Total
2011	\$159,465	\$ 6,747	\$ -	\$ -	\$ -	\$107,611	\$135,323	\$ 66,770	\$ 6,583	\$ -	\$ 5,000	\$487,499
2010	\$254,076	\$ 7,380	\$ 969	\$ 741	\$ -	\$ 52,881	\$129,223	\$ -	\$ -	\$ -	\$ 5,000	\$450,271
2009	\$134,980	\$ 6,488	\$ 857	\$1,034	\$ 141	\$ 48,213	\$ -	\$ -	\$ -	\$ -	\$ 7,590	\$199,303
2008	\$ 83,398	\$ 7,148	\$ 941	\$1,671	\$ 440	\$ 61,414	\$ -	\$ -	\$ -	\$ -	\$ 5,000	\$160,012
2007	\$140,431	\$ 6,788	\$ 941	\$1,008	\$ 302	\$ 45,911	\$ -	\$ -	\$ -	\$ -	\$ 14,908	\$210,289
2006	\$ 90,325	\$ 4,637	\$ 734	\$2,357	\$ 468	\$ 59,349	\$ -	\$ -	\$ -	\$ -	\$ 9,075	\$166,945
2005	\$134,697	\$ 6,912	\$ 2,252	\$1,820	\$1,854	\$ 65,900	\$ -	\$ -	\$ -	\$ -	\$ 13,292	\$226,213
2004	\$ 59,316	\$ 5,044	\$ 1,606	\$1,143	\$ 598	\$ 33,876	\$ -	\$ -	\$ -	\$150,000	\$ 12,178	\$265,017
2003	\$ 15,334	\$ 6,717	\$ 454	\$ 500	\$ 566	\$ 1,165	\$ -	\$ -	\$ -	\$150,000	\$ 6,302	\$181,070
2002	\$ 15,300	\$ 1,405	\$ -	\$ -	\$ -	\$ 13,818	\$ -	\$ -	\$ -	\$150,000	\$ 5,676	\$186,765

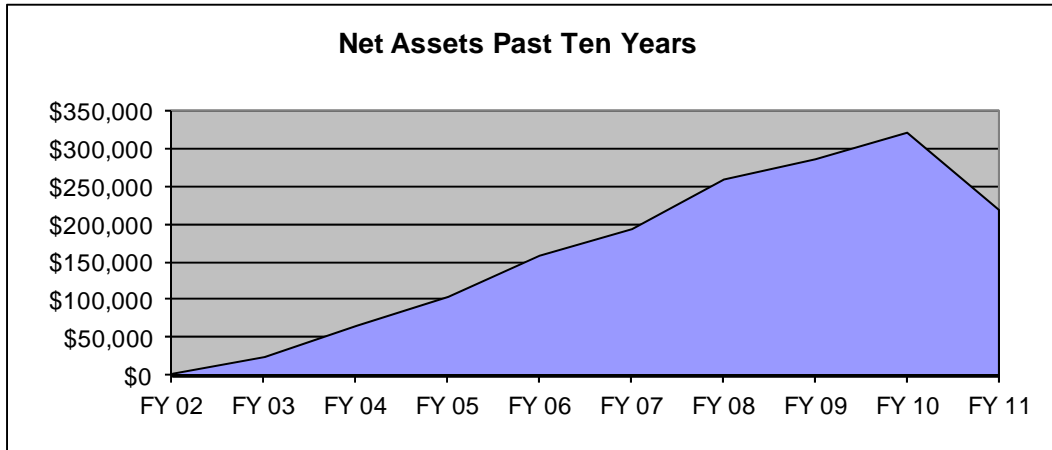
**Grant Revenues By Source All Years Combined**



**Note: The School began enrolling students in FY 02.**  
**Source: School Financial Records**

Life Skills Center of Middletown  
Net Assets  
Last Ten Fiscal Years

<u>Year</u>	<u>Invested in Capital Assets</u>	<u>Unrestricted</u>	<u>Total</u>	<u>Change in Net Assets</u>
2011	\$ -	\$221,059	\$ 221,059	\$ (84,971)
2010	\$ -	\$306,030	\$ 306,030	\$ 17,718
2009	\$ 424	\$287,888	\$ 288,312	\$ 27,029
*2008	\$ 5,264	\$256,019	\$ 261,283	\$ 65,761
2007	\$ 10,104	\$185,418	\$ 195,522	\$ 34,910
2006	\$ -	\$160,612	\$ 160,612	\$ 54,821
2005	\$ -	\$105,791	\$ 105,791	\$ 38,503
2004	\$ -	\$ 67,288	\$ 67,288	\$ 41,289
2003	\$ -	\$ 25,999	\$ 25,999	\$ 22,064
2002	\$ -	\$ 3,935	\$ 3,935	\$ 3,935



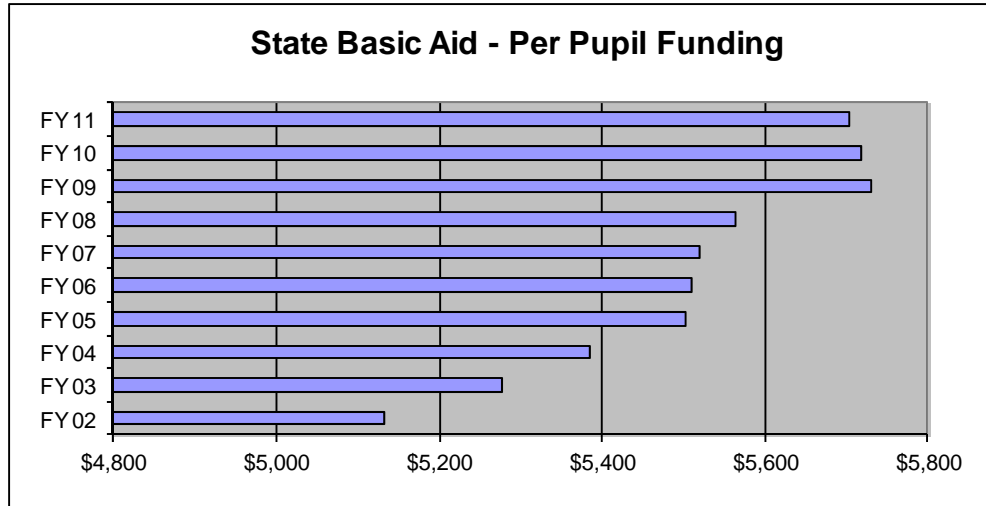
**Note: The School began enrolling students in FY 02.**

**\* A prior period adjustment of \$23,796 was recorded**

**Source: School Financial Records**

Life Skills Center of Middletown  
 State Basic Aid – Per Pupil Funding Amount  
 Last Nine Fiscal Years

Year	Per Pupil Funding	Cost of Doing Business	Total Per Pupil
2011	\$ 5,703	-	\$ 5,703
2010	\$ 5,718	-	\$ 5,718
2009	\$ 5,732	-	\$ 5,732
2008	\$ 5,565	-	\$ 5,565
2007	\$ 5,403	1.0215	\$ 5,519
2006	\$ 5,283	1.0431	\$ 5,511
2005	\$ 5,169	1.0646	\$ 5,503
2004	\$ 5,058	1.0646	\$ 5,385
2003	\$ 4,949	1.0663	\$ 5,277
2002	\$ 4,814	1.0663	\$ 5,133



**Note 1:** In addition to the above, the School also receives other sources of State Aid including (but not limited to) Career Based Intervention Funding, Disadvantaged Pupil Impact, Parity Aid, and Special Education funding. The revenues have collectively been identified on the Statement of Revenues, Expenses, and Changes in Net Assets as “State Aid”.

The Cost of Doing Business Factors are determined by the State of Ohio and vary by region.

**Note 2:** The School began enrolling students in FY 02.

**Note 3:** The Ohio Department of Education eliminated the cost of doing business factor in fiscal year 2008.

Source: Ohio Department of Education

Life Skills Center of Middletown  
Student Population by Resident District  
2011 Fiscal Year

---

<u>Resident District</u>	<u>%</u>
Carlisle	1.52%
Edgewood	1.60%
Hamilton	0.90%
Franklin	2.22%
Lakota	1.96%
Madison	4.79%
Middletown	75.98%
Monroe	3.06%
Preble Shawnee	2.19%
New Miami	0.90%
All Other Districts	4.88%

**Note 1:** The School has open enrollment and draws its population from a large surrounding area. The traditional school district that the student resides in is referred to as the Resident District.

**Note 2:** Districts representing less than 1 percent of the student population are combined under the heading "All Other Districts".

**Source:** Ohio Department of Education

Life Skills Center of Middletown  
Miscellaneous Statistics

---

**School Address:** 631 South Breiel Boulevard  
Middletown, Ohio 45042

**Square Footage:** 13,182 sq. ft.

**Date of Incorporation:** 10/23/2000

**Instructional Staff:** 15

**Total FY 11 Staff:** 18

} **Note: All Staff are employees of WHLS of Ohio, LLC. See Note 7 in Notes to the Basic Financial Statements.**

**Instructional Staff/  
Student Ratio:** 16:1

**Number of Graduates  
since inception:** 631

**Percent of Low  
Income Students:** 79.2%

**Source: School Records**





# Dave Yost • Auditor of State

**LIFE SKILLS CENTER OF MIDDLETOWN**

**BUTLER COUNTY**

**CLERK'S CERTIFICATION**

**This is a true and correct copy of the report which is required to be filed in the Office of the Auditor of State pursuant to Section 117.26, Revised Code, and which is filed in Columbus, Ohio.**

*Susan Babbitt*

**CLERK OF THE BUREAU**

**CERTIFIED  
FEBRUARY 14, 2012**